

DX-750G



The compact and lightweight DX-750G provides 5.19 effective megapixels (recordable up to 7.08 megapixels). Straightforward operation makes it a particularly suitable system for beginners.

Main Features of the DX-750G Housing

- All functions of the 750G camera are available underwater
- Exterior bayonet mount accepts the wide-angle conversion lens, which can be attached or detached underwater
- Equipped with a fibre-optic cable socket for accessory off-camera strobes
- Built in flash diffuser partially or fully over the camera's internal flash window and works to soften flash output or block it completely when using an external strobe
- Built with a solid grip protector for a secure hold underwater
- Ruggedly constructed with a depth rating of 45m
- Inner hood and external LCD monitor hood to improve LCD visibility in bright light

Main Features of the 750G Camera

- Very fine 1/2.5-inch primary-colour CCD - Effective image quality of 5.19 megapixels (recordable up to 7.08 megapixels). High-quality CCD renders crisp detail and rich, accurate colour
- Equipped with a large, bright and high contrast 2.0-inch LCD monitor - Bigger is better for composition, replay, and adjustment
- 35-105mm optical 3x zoom - Versatile 3x zoom lens provides a wide range of focal lengths appropriate for a wide range of subjects and distances. This lens will shoot wide angle to telephoto, whatever you need for whatever you see
- Macro photography shooting distance as close as 10cm / 4inch - In macro mode you can position your lens as close as 10cm / 4inch from the subject for highly magnified and hyper vivid images
- A variety of white balance settings suitable for any shooting environment - In automatic mode the camera selects the appropriate white balance setting from the data garnered on the quantity of light and subject's colours. Five other modes are selectable according to such specific sources of light as "outdoor" and "indoor." White balance can also be customised
- Photo Frame Setting - The 750G menu offers nine decorative photo frames. This unique feature allows you to capture the image within the frame of your choice, already fancy-framed and ready to print
- Movie function - The 750G takes video with audio, at 640x480 pixel resolution, 24 frames per second
- Memory - Recordable to SD/Multimedia Card. The 750G camera is equipped with a 16-MB built-in memory. Think of it as a backup in the event you forget your card or your card is full
- Powered by alkaline or nickel metal hydride AA batteries - The 750G camera accepts both alkaline AA batteries, which are available anywhere even on a trip, and rechargeable nickel metal hydride batteries
- Compatible with PictBridge - The accessory USB cable will connect the camera directly to any printer that supports the PictBridge interface



DX8000G



Compact, mega-powered camera for superb photography underwater and on land. The DX8000G puts high resolution images in your hands.

Main Features of the DX-8000G Housing

- All functions of the DX8000G camera are available underwater
- A 0.6x wide-angle conversion lens for the DX8000G housing attaches directly to the housing using the specially designed bayonet mount
- Comes with dual fibre-optic cable connector sockets
- Provides easy adjustment of aperture, shutter speed, and other settings using the camera's up-down (sub-command) dial
- Includes a versatile internal flash diffuser that with the push of a lever slips into place to soften the camera's internal flash, or moves out of the way for strong, clear lighting
- Built with a solid grip protector for a secure hold underwater
- Ruggedly constructed with a depth rating of 55m
- Comes with a special inner and outer LCD monitor hood to improve LCD visibility in strong light

Main Features of the 8000G Camera

- Razor-sharp images thanks to 8.24 million effective pixels - The DX8000G captures images using 8.24 million effective pixels that clearly record the details in every frame. This high-end compact digital camera processes mass image data at high speed and simultaneously reduces image noise
- Zooms from 28mm wide angle to 85mm telephoto - The DX8000G's zoom lens contains nine lens elements in seven groups and employs an optical 3x zoom that expands to 28mm at full wide angle and captures ample light around its edges
- Clean and elegant body design - The DX8000G camera has a stylish aluminum alloy body that fits comfortably in your hand. The platinum-silver-coated grip makes the camera easy to hold and shoot
- Shoots movies - The DX8000G camera goes beyond still images: it shoots movies! It can capture high-quality moving images (AVI format, 30 fps) underwater, and can shoot until the camera's memory is filled.
- ADJ button takes you straight to preferred parameter settings - You can customise the DX8000G camera's ADJ button to display parameter settings that you use most often: exposure compensation, white balance, ISO, and other functions
- Histogram display gives you real-time exposure data - You can display a real-time histogram on the LCD monitor while you're shooting so you can see the light levels in your image, or display the histogram for images you've already captured
- Adjustable white balance - White balance works a little like a colour filter. The DX8000G offers six white-balance modes: Auto, Daylight, Overcast, Tungsten Light, Fluorescent Light, and One-Push (Manual Setting) that manually sets the white balance
- Exposure compensation - You can set exposure compensation in fine increments of 1/3 EV, perfect for capturing images with tricky lighting. Exposure compensation ranges from +2.0 EV to -2.0 EV in 1/3 EV increments for fine adjustment
- Aperture Prioritised Mode and Manual Exposure Mode - The aperture Prioritised exposure mode lets you set the size of the iris opening in the camera's lens. You can use it to control the depth of field
- Manual Focus/AF Target focus - Manual focus allows you to manually set the focus in conditions where automatic focus can't get a lock on your subject
- Power supply - The DX8000G supports either AA rechargeable batteries or readily available alkaline AA batteries



How to select your
Digital Camera

Land cameras are primarily designed to take photos on, well... land, yet many manufacturers promote land cameras shoved into a housing as the solution for divers.

On land you generally have all the time in the world to take photos and as your subjects are often people they will understand when you ask them to pose and say "cheese". Fish and other fast moving marine creatures are often less co-operative. This is just one of the major considerations when choosing your underwater camera.

Importantly you need to consider your investment as more than just a camera, you need to be able to expand into a total camera system. Sea & Sea is the world's leading underwater photo specialists, they have considered all the critical elements listed below in their design of underwater camera systems.

The key things you should consider are:

- Ability to capture subjects of fast moving marine life
- Ability to take shots of large images at close range
- Ability to get close enough to capture small images
- Ability to adapt accessories to properly light the subject
- Ability to enlarge image without significant loss of quality
- High quality housing with deep depth rating and easy to use



fish don't stop to say
cheese!

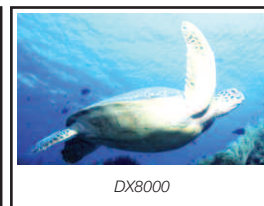
Ability to capture fast moving marine life

Shutter lag is the time taken between pushing the button to capture an image and when the photo is taken. Often the shutter lag on a land cameras is so slow that you will be lucky to capture the tail of your subject as it swims by. The DX8000G has the worlds shortest shutter lag in its class of only 0.12 sec so you will capture more of the action with a DX8000G.



Ability to take shots of large images at close range

The further you are from your subject, the more water you have between you and your subject. Water absorbs light and as there is particle in the water the further away from your subject you get the more the image will deteriorate, often having reduced colour and/ or particle matter showing up in the image.

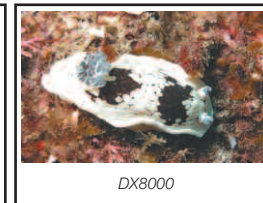


A wide angle lens opens up the angle of vision allowing you to get closer to the subject while still fitting the full subject in the image. A wide angle lens is a critical accessory that can be fitted to all Sea & Sea digital cameras.

Ability to get close enough to capture small images

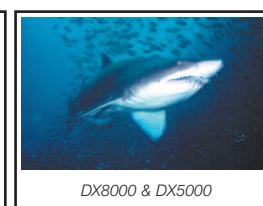
In order to get a full size image of small subjects you need to get close. But in order to focus many cameras require a significant distance from the subject which means the subject will appear very small in the picture. While this image can be enhanced and cropped on a computer, image quality will be significantly degraded if enlarged to a true size. By shooting with an advanced macro lens, the likes of

which is built into Sea & Sea cameras, which focus down to as little as 1 cm on some models. You will get sharp, clear images. That means that you capture more detail.



Ability to adapt accessories to properly light the subject

On land a small flash is all that is generally required to light your subject, even at night. However, because the water absorbs the light from your flash as well as surrounding light you need more powerful lighting systems, these are called strobes.



External strobes not only have more power, they also allow creative decisions to be made about lighting direction and shadows as they can be pointed in different directions. Serious photographers may have two strobes for even more light and control.

Control over a good lighting system is the key to making the ordinary photograph extraordinary underwater. While most cheap digital camera housings have no provision for external strobes, Sea & Sea produce cameras and housings designed specifically for use underwater and they have the widest available selection of digital ready strobes. In short, there is a Sea & Sea lighting solution to suit all budgets and needs.

Ability to enlarge image without significant loss of quality

Now its time to talk about mega pixels, just about every ad for cameras talks about megapixels as though it were the most important subject yet few people really know what it means.

A digital image is essentially a number of dots, mega pixels is essentially a measurement of the number of dots per square centimetre. It will be almost impossible to pick the difference between a standard size photo from a two-three megapixel camera compared to say an 8 megapixel camera. However, as you start to blow the image up the dots essentially move further apart, eventually the shot looks "grainy" and loses definition. If you want to mount a large image on your wall you will want to consider a camera with in excess of 5 megapixels.

High quality housing with deep depth rating and easy to use

Sea & Sea housings are rated deeper than many other housings available, are made from high quality poly carbonates for more strength and have easy to use labelled buttons to avoid confusion.

Advanced features

Once you become more proficient you will want even more control over your image creation. That is where the DX8000G comes into its own.

The lens aperture refers to the opening of the lens to take the photo. Most digital cameras have an automatic aperture setting, the DX8000G has a special control that allows either automatic or manual control of aperture setting to create special effects.

features	DX-750G	DX-8000G
Effective image quality	5.19 megapixels	8.24 megapixels
Lens	35-105mm 3x zoom	28-85mm 3x zoom
Wide angle lens adapter	Yes 24mm equivalent	Yes 17mm equivalent
Macro capability	Yes - 10cm	Yes - 1cm
External strobe attachment	Yes single fiber optic	Yes dual fiber optic
Base stay and strobe arm attach	Yes	Yes
Depth rating	45m	55m
Movie recording facility	Yes	Yes
All camera functions available u/water	Yes	Yes
LCD display'	2' colour	'1.8' colour
Housing construction	Quality Polycarbonate	Quality Polycarbonate
Housing dimensions (WxHxD)	142.2x93.7x90mm	150x94.9x103mm
Multiple white balance settings	Yes	Yes
Electronic / Mechanical shutter	Yes	Yes
Exposure	Auto	Aperture Prioritised & Auto

Sea & Sea have a wide range of housings & accessories



Training and Advice

In order to get the most out of your Sea & Sea camera we recommend proper training and advice from your professional Sea & Sea dealer.

SEA&SEA
UNDERWATER CAMERA EQUIPMENT

www.aquanaut.com.au
www.seaandsea.jp