



## 2015 / 2016 PRICELIST



**NEPTUNE**  
AUSTRALIA



**Aquanaut Pty Ltd**

18 Arunga Drive, Beresfield, NSW 2322

Phone 02 4966 4900, Fax 02 4966 4955, [www.aquanaut.com.au](http://www.aquanaut.com.au), [sales@aquanaut.com.au](mailto:sales@aquanaut.com.au)

Version 1.00. Effective from 01/08/2015 until further notice. Pricelist is subject to Aquanaut Terms and conditions. Prices may be subject to change without notice.

NEPTUNE COVERT WETSUITS.....	2
NEPTUNE DIVE WETSUITS .....	3
NEPTUNE SPORT WETSUITS .....	6
NEPTUNE FREEDIVE WETSUITS .....	7
NEPTUNE BOOTS.....	8
NEPTUNE GLOVES.....	9
NEPTUNE HOODS .....	9
NEPTUNE BAGS .....	10
NEPTUNE KNIVES .....	11
IKELITE TORCHES.....	12
NEPTUNE INSTRUMENTS.....	13
NEPTUNE SERVICE KITS AND DIN ADAPTORS.....	14
CYLINDERS & VALVES .....	14
NEPTUNE VALVE SERVICE KITS & PARTS.....	15
NEPTUNE CYLINDER & VALVE ACCESSORIES .....	16
NEPTUNE SAFETY & SIGNALLING ACCESSORIES .....	17
NEPTUNE ADAPTORS & FITTINGS.....	18
NEPTUNE HOSES & HOSE PROTECTORS.....	19
NEPTUNE LANYARDS & CLIPS.....	20
STRAPS, MOUTHPIECES & GENERAL ACCESSORIES .....	20
WEIGHT BELTS, WEIGHTS & COMPONENTS.....	22
NEPTUNE TOOLS & LUBRICANTS .....	23
JAWS CLEANING & CONDITIONING PRODUCTS.....	25
SURFACE MARKER SIGNALLING .....	26
NEPTUNE MASKS .....	27
NEPTUNE SNORKELS .....	28
NEPTUNE PVC MASK & SNORKEL COMBOS.....	28
NEPTUNE SILICONE MASK & SNORKEL COMBOS .....	29
NEPTUNE PVC MASK, SNORKEL & FIN SETS .....	29
NEPTUNE SILICONE MASK, SNORKEL & FIN SETS .....	29
NEPTUNE WETSUIT SIZE CHART .....	30
MTM/SIZE CHECK FORM.....	31
MTM HOW TO MEASURE INSTRUCTIONS .....	32

**NEPTUNE COVERT WETSUITS**

Neptune Covert wetsuits use HECS stealthscreen technology, a patented technology to block your bodies electrical signal and allow you to get closer to marine life. Neptune Covert products are designed to reduce the electromagnetic output of the wearer so less is emitted and detectable from the outside. Some species of sharks and other marine life are attuned to very minor electromagnetic signals. Typically such aquatic species are also sensitive to visual and olfactory stimulation, which a Covert product does not effect at all. The user assumes all responsibility and risk involved when in the habitat of sharks, rays and other marine life.

**DRY ICE COVERT 7MM SEMI-DRY WETSUIT**

Unique dive cut design – cut to fit the body morphology of the diver in water.

HECS stealthscreen technology– patented technology designed to reduce your body's electrical signal and help you to get closer to marine life in its natural undisturbed state.

	RRP
WSNECVDIT7M DRY ICE COVERT SEMI DRY	1099.00

Mens Sizes - 3 Slim, 3, 3 Solid, 4 Slim, 4, 4 Solid, 5 Slim, 5, 5 Solid, 6 Slim, 6, 6 Solid

**FROST COVERT 7MM SEMI-DRY WETSUIT**

	RRP
WSNECVFRT7L FROST COVERT SEMI DRY	1099.00

Womens Sizes - 8, 10 Slim, 10, 10 Solid, 12 Slim, 12, 12 Solid, 14 Slim, 14, 14 Solid, 16 Slim, 16

**TRITON COVERT SEMI-DRY WETSUIT**

Unique dive cut design – cut to fit the body morphology of the diver in water.

HECS stealthscreen technology– patented technology designed to reduce your body's electrical signal and help you to get closer to marine life in its natural undisturbed state.

	RRP
WSNECVTRT7M TRITON COVERT 7/5MM	799.00
WSNECVTRT5M TRITON COVERT 5MM	699.00

Mens Sizes - 3 Slim, 3, 3 Solid, 4 Slim, 4, 4 Solid, 5 Slim, 5, 5 Solid, 6 Slim, 6, 6 Solid

**AMULETTE COVERT SEMI-DRY WETSUIT**

	RRP
WSNECVAMU7L AMULETTE COVERT 7/5MM	799.00
WSNECVAMU5L AMULETTE COVERT 5MM	699.00

Womens Sizes - 8, 10, 12 Slim, 12, 12 Solid, 14 Slim, 14, 14 Solid, 16 Slim, 16

**COVERT PRO SERIES 3MM SEMI-DRY WETSUIT**

	RRP
WSNECVPS3M COVERT PRO SERIES MENS	499.00
WSNECVPS3L COVERT PRO SERIES WOMENS	499.00

Mens Sizes - 3 Slim, 3, 3 Solid, 4 Slim, 4, 4 Solid, 5 Slim, 5, 5 Solid, 6 Slim, 6, 6 Solid

Womens Sizes - 8, 10, 12 Slim, 12, 12 Solid, 14 Slim, 14, 14 Solid, 16 Slim, 16

**COVERT SEMI-DRY HOOD**

	RRP
HDNECVSD3 COVERT HOOD 3MM	79.95

Sizes - XSM, SML, MED, LGE, XLG, XXL

Covert model wetsuits are only held in small quantities. Most orders will be built to order within two weeks.



## NEPTUNE DIVE WETSUITS

Recreational divers know there is nothing that can ruin the experience quicker than feeling cold. Packed with the latest technology, techniques and features, Neptune's range of wetsuits will keep you warm all year round. We expect our suits to stand up to the punishment of the real world. We understand that they will be exposed to chlorinated pools and razor-sharp rocks. We know that our wetsuits will be pulled and stretched and left to dry on the dive boat's railing. We realise you want to look good in your new suit so we make our suits look sensational without compromising durability, comfort or warmth. Every wetsuit is made to an exacting standard; every detail, from the thread to the stitching, to the seams to the cut is a triumph of design and manufacture, and testimony to the ingenuity and creativity of our designers.



### DRY ICE TECH 7MM SEMI-DRY WETSUIT

While the primary purpose of your wetsuit is to keep you warm, looks do matter. The all black suit with fantastic, technical looking textures and graphics will make you look cool but feel warm in your new Dry Ice Tech.

Featuring - Optimum stretch neoprene, Neptune masterseal horizontal zip technology, unique multiform hood system, secure stitch technology with limited lifetime guarantee & infinite fit system

		RRP
WSNEDIT7M	DRY ICE TECH SEMI DRY 7MM	995.00
Mens Sizes - 3 Slim, 3, 3 Solid, 4 Slim, 4, 4 Solid, 5 Slim, 5, 5 Solid, 6 Slim, 6, 6 Solid		



### FROST TECH 7MM SEMI-DRY WETSUIT

While the primary purpose of your wetsuit is to keep you warm, looks do matter. The all black suit with fantastic, technical looking textures and graphics will make you look cool but feel warm in your new Frost Tech.

Featuring - Optimum stretch neoprene, Neptune masterseal horizontal zip technology, unique multiform hood system, secure stitch technology with limited lifetime guarantee & infinite fit system

		RRP
WSNEFRT7L	FROST TECH SEMI DRY 7MM	995.00
Womens Sizes - 8, 10 Slim, 10, 10 Solid, 12 Slim, 12, 12 Solid, 14 Slim, 14, 14 Solid, 16 Slim, 16		



### DRY ICE 7/5MM STANDARD SEMI-DRY WETSUIT

While the primary purpose of your wetsuit is to keep you warm, looks do matter. The all black suit with fantastic, technical looking textures and graphics will make you look cool but feel warm in your new Dry Ice.

Featuring - Optimum stretch neoprene, Neptune masterseal horizontal zip technology, secure stitch technology with limited lifetime guarantee & infinite fit system

		RRP
WSNEDIS7M	DRY ICE STD SEMI DRY 7/5MM	895.00
Mens Sizes - 3 Slim, 3, 3 Solid, 4 Slim, 4, 4 Solid, 5 Slim, 5, 5 Solid, 6 Slim, 6, 6 Solid		

**FROST 7/5MM STANDARD SEMI-DRY WETSUIT**

While the primary purpose of your wetsuit is to keep you warm, looks do matter. The all black suit with fantastic, technical looking textures and graphics will make you look cool but feel warm in your new Frost.

Featuring - Optimum stretch neoprene, Neptune masterseal horizontal zip technology, secure stitch technology with limited lifetime guarantee & infinite fit system

	RRP
<b>WSNEFRS7L FROST STD SEMI DRY 7/5MM</b>	<b>895.00</b>
Womens Sizes - 8, 10 Slim, 10, 10 Solid, 12 Slim, 12, 12 Solid, 14 Slim, 14, 14 Solid, 16 Slim, 16	

**TRITON 7/5MM SEMI-DRY WETSUIT**

Fitted with titanium lined seal surrounding your body, completely covering all your vital organs, ensuring that your body's core warmth is maintained making your dive much more comfortable.

	RRP
<b>WSSDTRTM TRITON SEMI DRY 7/5MM</b>	<b>645.00</b>
Mens Sizes - 3 Slim, 3, 3 Solid, 4 Slim, 4, 4 Solid, 5 Slim, 5, 5 Solid, 6 Slim, 6, 6 Solid	

**AMULETTE 7/5MM SEMI-DRY WETSUIT**

Fitted with titanium lined seal surrounding your body, completely covering all your vital organs, ensuring that your body's core warmth is maintained making your dive much more comfortable.

	RRP
<b>WSNEAMU7L AMULETTE SEMI-DRY 5/7MM</b>	<b>645.00</b>
Womens Sizes - 8, 10, 12 Slim, 12, 12 Solid, 14 Slim, 14, 14 Solid, 16 Slim, 16 AVAILABLE IN POWDER PINK OR POWDER BLUE COLOURS	

**BLITZ II 7/5MM STEAMER WETSUIT**

The latest evolution of our most popular wetsuit. Optimum stretch neoprene, chunky metal slider rear vertical zip, Neptune wrapflex collar design, secure stitch technology with limited lifetime guarantee, infinite fit system, Neptune gasket seal technology, Neptune proprietary seam seal process, includes ankle zips

	RRP
<b>WSNEBL2M BLITZ II 7/5MM STEAMER</b>	<b>395.00</b>
Mens Sizes - 3 Slim, 3, 3 Solid, 4 Slim, 4, 4 Solid, 5 Slim, 5, 5 Solid, 6 Slim, 6, 6 Solid, 7	


**BLITZ II 7/5MM STEAMER WETSUIT**

The latest evolution of our most popular wetsuit. Optimum stretch neoprene, chunky metal slider rear vertical zip, Neptune wrapflex collar design, secure stitch technology with limited lifetime guarantee, infinite fit system, Neptune gasket seal technology, Neptune proprietary seam seal process, includes ankle zips

		RRP
WSNEBL2L	BLITZ II 7/5MM STEAMER	395.00

Womens Sizes - 8, 10 Slim, 10, 10 Solid, 12 Slim, 12, 12 Solid, 14 Slim, 14, 14 Solid, 16, 16 Solid


**AGGRESSOR 4/5MM STEAMER WETSUIT**

The ultimate cross-over suit - Ideal warm water dive suit or cold water sports suit. Featuring - Optimum flex neoprene, chunky metal slider rear vertical zip, Neptune wrapflex collar design, secure stitch technology with limited lifetime guarantee, Neptune proprietary seam seal process.

		RRP
WSNEAGRM	AGGRESSOR 4/5MM STEAMER	295.00

Mens Sizes - 2, 3, 4, 5, 6, 7


**MISTIQUE 4/5MM STEAMER WETSUIT**

The ultimate cross-over suit - Ideal warm water dive suit or cold water sports suit. Featuring - Optimum flex neoprene, chunky metal slider rear vertical zip, Neptune wrapflex collar design, secure stitch technology with limited lifetime guarantee, Neptune proprietary seam seal process.

		RRP
WSNEMSTL	MISTIQUE 4/5MM STEAMER	295.00

Womens Sizes - 8, 10, 12, 14, 16

Neptune Wetsuits are manufactured in Australia. Our full manufacturing facility builds commercial wetsuits, specialised wetsuits for many public safety organisations, & custom designed rental suits for Australia's largest charter fleets. Neptune also has full repair and alternation services available.



For more information on custom suits contact your local Area Manager or Aquanaut Head Office



## NEPTUNE SPORT WETSUITS

Stay warm in the water this spring/summer wearing a Neptune Sport Wetsuit. Fitted perfectly to your body, these anatomically designed suits are perfect for mild conditions, and the flat-lock stitching ensures you'll be comfortable in the water!



### AGGRESSOR 3MM STEAMER WETSUIT

The Aggressor steamer is the ideal lightweight wetsuit for tropical water diving.

Featuring - Flat locked stitching, hyper stretch neoprene, Neptune chunky vertical zip, Neptune anatomical preform cut, mesh chest panel, Neptune Neoshield knee pads

		RRP
WSNEAST	AGGRESSOR STEAMER	199.00
Mens Sizes - 3, 4, 5, 6, 7		



### MISTIQUE 3MM STEAMER WETSUIT

The Mistique steamer is the ideal lightweight wetsuit for tropical water diving.

Featuring - Flat locked stitching, hyper stretch neoprene, Neptune chunky vertical zip, Neptune anatomical preform cut, mesh chest panel, Neptune Neoshield knee pads

		RRP
WSNEMST	MISTIQUE STEAMER	199.00
Womens Sizes - 8, 10, 12, 14, 16		



### STORM 3MM STEAMER WETSUIT

The Storm is a flat-locked steamer suitable for surf, scuba and paddle.

		RRP
WSNESSH3L	STORM SHORTY 2/3MM	119.99
Womens Sizes - 8, 10, 12, 14, 16		



### WARRIOR 3MM SHORTY WETSUIT

The Warrior is a flat-locked shorty suitable for surf, scuba and paddle.

		RRP
WSNEWSH3M	WARRIOR SHORTY 2/3MM	89.99
Mens Sizes - 3, 4, 5, 6, 7		



### STORM 3MM SHORTY WETSUIT

The Storm is a flat-locked shorty suitable for surf, scuba and paddle.

		RRP
WSNESSH3L	STORM SHORTY 2/3MM	89.99
Womens Sizes - 8, 10, 12, 14, 16		

## NEPTUNE FREEDIVE WETSUITS

Neptune's line of Freediver wetsuits are specifically designed for freediving performance and spearfishing excellence. If you are freediving, there is a Neptune suit available to make your experiences more enjoyable and efficient.



### FREEDIVER 3MM WETSUIT

The optimum wetsuit for the freediver is this two piece suit consisting of the hooded jacket and high waisted pants. The hooded jacket is superior for warmth and streamlining. The high waisted pants are superior for breathing performance and adherence to the skin from the jacket.

		RRP
WSNEFRE3HWTM	MENS FREEDIVER 3MM HWT	187.50
WSNEFRE3PJM	MENS FREEDIVER 3MM PJ	187.50
WSNEFRE3HWTL	WOMENS FREEDIVER 3MM HWT	187.50
WSNEFRE3PJL	WOMENS FREEDIVER 3MM PJ	187.50

Mens Sizes - 3 Slim, 3, 4 Slim, 4, 4 Solid, 5 Slim, 5, 5 Solid, 6

Womens Sizes - 8 Solid, 10, 10 Solid, 12 Slim, 12, 12 Solid, 14 Slim, 14, 14 Solid

Note that a full suit is one PJ and one HWT



### FREEDIVER 5MM WETSUIT

The optimum wetsuit for the freediver is this two piece suit consisting of the hooded jacket and high waisted pants. The hooded jacket is superior for warmth and streamlining. The high waisted pants are superior for breathing performance and adherence to the skin from the jacket.

		RRP
WSNEFRE5HWTM	MENS FREEDIVER 5MM HWT	212.50
WSNEFRE5PJM	MENS FREEDIVER 5MM PJ	212.50
WSNEFRE5HWTL	WOMENS FREEDIVER 5MM HWT	212.50
WSNEFRE5PJL	WOMENS FREEDIVER 5MM PJ	212.50

Mens Sizes - 3 Slim, 3, 4 Slim, 4, 4 Solid, 5 Slim, 5, 5 Solid, 6

Womens Sizes - 8 Solid, 10, 10 Solid, 12 Slim, 12, 12 Solid, 14 Slim, 14, 14 Solid

Note that a full suit is one PJ and one HWT



**NEPTUNE BOOTS****PRO 5MM DIVING BOOT**

		RRP
BTNEPRO	PRO BOOT	89.95
Sizes - 4, 5, 6, 7, 8, 9, 10, 11, 12, 13		

**EXPLORER 5MM DIVING BOOT**

		RRP
BTNEEXP	EXPLORER BOOT	74.95
Sizes - 4, 5, 6, 7, 8, 9, 10, 11, 12, 13		

**TRACTION 5MM DIVING BOOT**

		RRP
BTNETRA	TRACTION BOOT	49.95
Sizes - 4, 5, 6, 7, 8, 9, 10, 11, 12, 13, 14, 15		

**BEACHWALKER 3MM WETSHOE**

		RRP
BTNEBEA	BEACHWALKER SHOE	34.95
Sizes - 5, 6, 7, 8, 9, 10, 11, 12, 13		

**NRS HEAVY DUTY DIVING BOOT**

		RRP
BTNRWB	NRS WORK BOOT	189.95
Sizes - 6, 7, 8, 9, 10, 11, 12, 13, 14, 15		

**3MM NEOPRENE SOCKS**

		RRP
WSSX3	SOCK 3MM	40.00
Sizes - XSM, SML, MED, LGE, XLG, XXL		

**NEPTUNE GLOVES**

**KEVLAR TECH 3MM GLOVE**

		RRP
GLNEKVT	KEVLAR TECH GLOVE	69.95
Sizes - XXS, XSM, SML, MED, LGE, XLG, XXL		


**APNEA 3MM GLOVE**

		RRP
GLNEAPN	APNEA GLOVE	49.95
Sizes - XXS, XSM, SML, MED, LGE, XLG, XXL		


**BLITZ 2MM GLOVE**

		RRP
GLNEBLI	GLOVE 2MM BLITZ	39.95
Sizes - XSM, SML, MED, LGE, XLG, XXL		


**CLASSIC GLOVE**

		RRP
GLNECLA	CLASSIC GLOVE	34.95
Sizes - ,XSM, SML, MED, LGE, XLG		

**NEPTUNE HOODS**

**5/3MM SEMI-DRY NEOPRENE HOOD WITH BIB**

		RRP
HDNEHDNT	NEOTECH WFS + BIB 5/3MM	59.95
Sizes - XSM, SML, MED, LGE, XLG, XXL		


**5/3MM SEMI-DRY NEOPRENE HOOD**

		RRP
HDNEHSDNT5	SEMI-DRY NEOTECH 5MM	59.95
Sizes - SML, MED, LGE, XLG, XXL		


**3MM SEMI-DRY NEOPRENE HOOD**

		RRP
HDNEHD3	SEMI-DRY 3MM	54.95
Sizes - SML, MED, LGE, XLG, XXL, 3XL		

**NEPTUNE BAGS****TRAVELLER WHEEL BAG**

		RRP
BGNETRA	TRAVELLER WHEEL BAG	249.95

**EXPEDITION WHEEL BAG**

		RRP
BGNEEXP	EXPEDITION WHEEL BAG	139.95

**MESH DUFFLE BAG**

		RRP
BGNEMES	MESH DUFFLE BAG	69.95

**30L DRY BAG**

		RRP
BGNEDRY30	DRY BAG 30L	39.95

**CRAY KEEPER SPRING LOADED CATCH BAG**

		RRP
BGNESPRCATBK	SPRING LOADED CATCH BLACK	74.95
BGNESPRCATOR	SPRING LOADED CATCH ORANGE	74.95

**NEOPRENE REGULATOR BAG**

		RRP
BGNEREG	NEOPRENE REGULATOR BAG	44.95

**PELAJ SPEARGUN BAG**

		RRP
BGPSGLGE	SPEARGUN BAG - 2080MM	119.95
BGPSGSMML	SPEARGUN BAG - 1680MM	109.95

**NEPTUNE KNIVES**

**APACHE DIVE KNIFE WITH SHEATH**

		RRP
KNNEAP	KNIFE APACHE	69.95


**APACHE SMALL DIVE KNIFE WITH SHEATH**

		RRP
KNNEAPSM	KNIFE APACHE SML	49.99


**BLADE KNIFE WITH SHEATH**

		RRP
KNNEBL	KNIFE BLADE	49.99


**PACIFIC KNIFE WITH SHEATH**

		RRP
KNNEPAC	KNIFE PACIFIC DIVING	24.99


**TASMAN KNIFE WITH SHEATH**

		RRP
KNNETAS	KNIFE TASMAN DIVING	24.99



**IKELITE TORCHES****IKELITE PCM 2 LED TORCH**

		RRP
T01760	LED PCM 2 BLACK	129.95
T01765	LED PCM 2 BLUE	129.95
T01768	LED PCM 2 YELLOW	129.95
REQUIRES 4 X AA BATTERIES		

**IKELITE PCA 2 LED TORCH**

		RRP
T01770	LED PCA 2 BLACK	139.95
T01775	LED PCA 2 BLUE	139.95
T01778	LED PCA 2 YELLOW	139.95
REQUIRES 6 X AA BATTERIES		

**IKELITE PC2 LED TORCH**

		RRP
T01780	LED PC 2 LED BLACK	139.95
T01785	LED PC 2 LED BLUE	139.95
T01788	LED PC 2 LED YELLOW	139.95
REQUIRES 4 X C BATTERIES		

**IKELITE GAMMA TORCH**

		RRP
T01800	GAMMA BLACK	189.95
T01801	GAMMA SILVER	189.95
T01803	GAMMA RED	189.95
REQUIRES 3 X LR44 BATTERIES		



Aquanaut supplies a full range of Ikelite underwater imaging equipment.



For more information on Ikelite contact your local Area Manager or Aquanaut Head Office

**NEPTUNE INSTRUMENTS**

**ANALOGUE TWO-IN-LINE SPG + DEPTH COMBO**

	RRP
GANECOMBO TWO INLINE COMBO (SPG + MDI)	249.00


**ANALOGUE SPG**

	RRP
GANESPG GAUGE SPG 300 BAR	149.00


**ANALOGUE SPG 300 BAR O2**

	RRP
GANESPG02 SPG 300 BAR O2	164.00


**COMPASS BUNGEE**

	RRP
GANECOMBS COMPASS BUNGEE	109.95


**COMPASS WRIST**

	RRP
GANECOMWS COMPASS WRIST	109.95


**COMPASS MODULE**

	RRP
GANECOMMOD COMPASS MODULE	79.95

**NEPTUNE SERVICE KITS AND DIN ADAPTORS FOR NEPTUNE REGULATORS**

		RRP
SKRGNEN2ND	SERVICE KIT NEPTUNE N SERIES 2ND STAGE (PFFR02)	10.10
SKRGNEN301ST	SERVICE KIT NEPTUNE N-30 1ST STAGE (PRFS810Y)	12.70
SKRGNEN601ST	SERVICE KIT NEPTUNE N-60 1ST STAGE (PRFS819Y)	27.45
SKRGNEN901ST	SERVICE KIT NEPTUNE N-90 1ST STAGE (PRFS817Y)	21.00

**CYLINDERS & VALVES****LUXFER ALUMINIUM CYLINDERS**

		RRP
CYLUS080BR	LUXFER S080 BRUSHED (11.1L)	385.00
CYLUS063BR	LUXFER S063 BRUSHED (9.0L)	375.00
CYLUS040YL	LUXFER S040 YELLOW (5.7L)	355.00
CYLUS019BR	LUXFER S019 BRUSHED (2.86L)	295.00

**INLINE 300 BAR DIN VALVE**

		RRP
VANE300DBK	VALVE INLINE 300 BAR DIN BK	140.00
VANE300DGR	VALVE INLINE 300 BAR DIN GR	140.00

**225 BAR DIN/K VALVE**

		RRP
VANEDK225	VALVE 225 BAR DIN/K	96.00

**225 BAR DIN/K ISOLATION MANIFOLD**

		RRP
VANEMAN225DK	MANIFOLD ISOLATION 225 BAR DIN/K	347.00

**VALVE NEPTUNE MANIFOLD CROSS SECTION**

		RRP
VANEMC	MANIFOLD CROSS SECTION	115.00

**VALVE NEPTUNE MANIFOLD LEFT**

		RRP
VANEML	MANIFOLD LEFT	115.00

Available September 2015

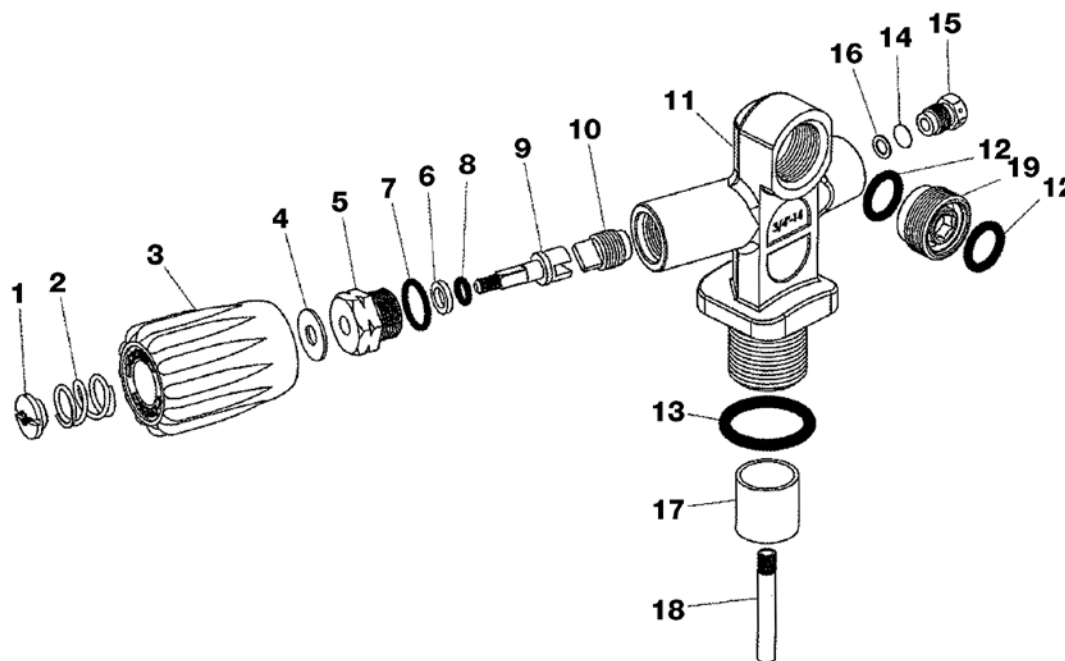
**VALVE NEPTUNE MANIFOLD RIGHT**

		RRP
VANEML	MANIFOLD RIGHT	115.00

Available September 2015

## NEPTUNE VALVE SERVICE KITS & PARTS

		RRP
SKVANE001	SERVICE KIT NEPTUNE DIN/K VALVE	14.69



No.			RRP
	PVNE06V	O-RING, VITON	1.21
	PVNE08V	O-RING, VITON	0.99
1	PVNE1	HANDWHEEL NUT	2.91
10	PVNE10	HP SEAT	7.31
12	PVNE12	O-RING	1.92
13	PVNE13	O-RING	1.49
	PVNE13V	O-RING, VITON	1.92
14	PVNE14	BURST DISC	1.49
15	PVNE15	SAFETY SCREW	5.11
	PVNE15-36	SAFETY SCREW - 36MPA	5.11
16	PVNE16	WASHER	1.21
18	PVNE18	BRASS TUBE	3.69
19	PVNE19	VALVE INSERT	14.06
2	PVNE2	SPRING	2.48
	PVNE20	HANDWHEEL KNOB GR	10.93
	PVNE22BK	CAP BK	8.52
	PVNE22GR	CAP GR	8.52
3	PVNE3	HANDWHEEL KNOB	11.43
4	PVNE4	WASHER	1.21
5	PVNE5	HEX NUT	6.81
6	PVNE6	O-RING	1.21
7	PVNE7	WASHER	0.50
8	PVNE8	O-RING	0.99
9	PVNE9	SPINDLE	6.81



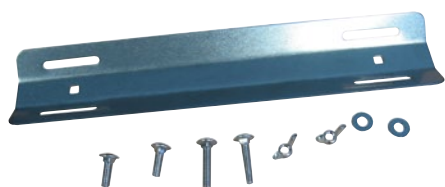
**NEPTUNE CYLINDER & VALVE ACCESSORIES (Please note no Line Discount applies)**

**ALUMINIUM BACKPLATE BLACK**

		RRP
ACNEBPABK	BACKPLATE ALUMINIUM BK	129.95


**TWIN CYLINDER BANDS**

		RRP
ACNECTBSS	CYLINDER TWIN BANDS S/S	199.00


**SINGLE CYLINDER ADAPTER**

		RRP
ACNECSA	CYLINDER SINGLE ADAPTOR	64.95


**CYLINDER BAND & BUCKLE KIT**

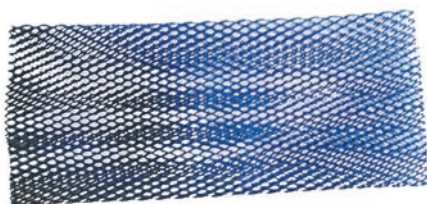
		RRP
ACNECBBC	BAND & BUCKLE COMPLETE	44.95


**CYLINDER STAGE STRAP**

		RRP
ACNECSS	CYLINDER STAGE STRAP	59.95


**CYLINDER BOOT**

		RRP
ACNECYBTBK	185MM CYLINDER WIDTH	11.95


**CYLINDER / TANK MESH**

		RRP
ACNECMBK	CYLINDER MESH BLACK	12.95
ACNECMBU	CYLINDER MESH BLUE	12.95
ACNECMYL	CYLINDER MESH YELLOW	12.95


**VALVE PROTECTOR**

		RRP
ACNEVP	VALVE PROTECTOR	4.95


**DIN PLUGS (FEMALE)**

		RRP
ACNEDFPC	DIN FEMALE PLUG DELRIN	8.95


**DIN PLUGS (MALE)**

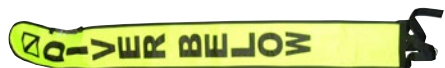
		RRP
ACNEDMPC	DIN MALE PLUG DELRIN	5.95



DIN TO YOKE CONVERTER		
		RRP
ACNEDYC	DIN TO YOKE CONVERTER	54.95

**NEPTUNE SAFETY & SIGNALLING ACCESSORIES (Please note no Line Discount applies)**


SURFACE MARKER ORANGE 1.8M		
		RRP
ACNESMOR18	SURFACE MARKER ORANGE 1.8M	99.95



SAFETY SIGNAL TUBE		
		RRP
ACNESST	SAFETY SIGNAL TUBE	30.95



SAFETY SAUSAGE		
		RRP
ACNESS	SAFETY SAUSAGE	9.95



30M SPOOL LINE		
		RRP
ACNESP30	SPOOL 30M LINE	25.95



UNDERWATER SLATE FOLDER INCLUDING PENCIL		
		RRP
ACNESLF	SLATE FOLDER	29.95



WRIST SLATE INCLUDING GRAPHITE PENCIL		
		RRP
ACNESLWS	SLATE WRIST W/GRAPHITE PENCIL	29.95



WATERPROOF NOTEPAD		
		RRP
ACNEWPNP	WATERPROOF NOTEPAD ORANGE	21.95



SLATE KIT DELUXE		
		RRP
ACNESLKD	SLATE KIT DELUXE	14.95



FLASHING LIGHTSTICK		
		RRP
ACNELSFG	LIGHTSTICK FLASHING GR	24.95

**ULTRAGLO LIGHT STICK**

		RRP
ACNEGLO10PK	LIGHT STICK 10CM PINK	5.95
ACNEGLO10YL	LIGHT STICK 10CM YELLOW	5.95

**DIVE WHISTLE**

		RRP
ACNEWHI	WHISTLE	4.95

**SAFETY DIVE KIT**

		RRP
ACNESK	SAFETY DIVE KIT	24.95

**TANK BANGER**

		RRP
ACNECB	CYLINDER BANGER	14.95

**POCKET MASK**

		RRP
ACNEPKM	POCKET MASK	19.95
ACNEPKMF	FILTER FOR POCKET MASK	8.45

**DIVE FLAG AND FLOAT**

		RRP
ACNEDFF	DIVE FLAG AND FLOAT	64.95

**DIVE FLAG**

		RRP
ACNEDFLGE	LARGE	24.95
ACNEDFSML	SMALL	14.95

**NEPTUNE ADAPTORS & FITTINGS (Please note no Line Discount applies)****MANUAL FREE FLOW CONTROL SWITCH**

		RRP
ACNEFFCSM	FREE FLOW CONTROL SWITCH	34.95

**OVER PRESSURE RELIEF VALVE**

		RRP
ACNEOPRV	OVER PRESSURE RELIEF VALVE	12.95

**PONY GAUGE 350 BAR**

		RRP
ACNEGAP350	GAUGE PONY 350 BAR	64.95



SWIVEL LP ADAPTOR 360 DEGREE		
		RRP
ACNESA1ST	SWIVEL LP ADAPTOR 360 DEGREE	37.95

20 DEGREE SWIVEL ADAPTER		
		RRP
ACNESA20D	SWIVEL ADAPTOR 20 DEGREE	29.95

AIR NOZZEL / TYRE INFLATOR		
		RRP
ACNEABTY	AIR NOZZEL W/ TYRE INFLATOR	42.95

REGULATOR DUST CAP		
		RRP
PRNE1002	REGULATOR DUST CAP	12.95

### NEPTUNE HOSES & HOSE PROTECTORS (Please note no Line Discount applies)



HOSE HP 81CM SMALL DIAMETER		
		RRP
ACNEH0HP81SD	HOSE HP 81CM SML DIAMETER	89.95

HIGH PRESSURE HOSE		
		RRP
ACNEH0HP	HP HOSE 81CM	84.95
ACNEH0HP15	HP HOSE 15CM	64.95



LOW PRESSURE HOSES		
		RRP
ACNEH0LP66	LP HOSE 66CM	44.95
ACNEH0LP90	LP HOSE 90CM	46.95
ACNEH0LP213	HOSE LP 213CM	89.95



LOW PRESSURE BRAIDED HOSES		
		RRP
ACNEH0LP68B	HOSE LP 68CM BRAIDED BLACK	54.95
ACNEH0LP213B	HOSE LP 213CM BRAIDED BLACK	99.95
ACNEH0LP91YLB	HOSE LP 91CM YL BRAIDED	59.95



QUICK DISCONNECT HOSE FOR BCD		
		RRP
ACNEH0QD	HOSE QD BC 68CM	44.95
ACNEH0LPQDB	HOSE LP QD 68CM BRAIDED	54.95



HOSE PROTECTOR		
		RRP
ACNEHP	HOSE PROTECTOR BK	5.95



**NEPTUNE LANYARDS & CLIPS (Please note no Line Discount applies)****EXTENDABLE COIL LANYARD**

		RRP
ACNELAGE	LANYARD - COIL EXTENDABLE	34.95

**LOCKING RETRACTABLE LANYARD**

		RRP
ACNELALR	LANYARD - LOCKING RETRACTABLE	44.95

**LANYARD**

		RRP
ACNELASBK	LANYARD - STANDARD BLACK	6.95
ACNELASBU	LANYARD - STANDARD BLUE	6.95
ACNELASYL	LANYARD - STANDARD YELLOW	6.95

**NEW!****STAINLESS STEEL DOUBLE ENDED HOOK**

		RRP
ACNESSDES100	SS DOUBLE ENDED HOOK 4"	15.95

**NEW!****STAINLESS STEEL BOLT SNAP**

		RRP
ACNESSBSN80	SS BOLT SNAP 80MM	12.95

**DELUXE BCD HOSE CLIP**

		RRP
ACNEHOCBD	HOSE CLIP FOR BC DELUXE	9.95

**STRAPS, MOUTHPIECES & GENERAL ACCESSORIES (Please note no Line Discount applies)****SILICONE MOUTHPIECE**

		RRP
ACNEMSBKS	MOUTHPIECE SIL. COMFO BITE	9.95
ACNEMPSBK	MOUTHPIECE REG BLACK SILICONE	8.95
ACNEMPSCCL	MOUTHPIECE REG CLEAR SILICONE	8.95

**RUBBER MOUTHPIECE**

		RRP
ACNEMRBK	MOUTHPIECE RUBBER BLACK	5.50

**MASK STRAP NEOPRENE TAMER WITH VELCRO**

		RRP
ACMSTBK	MASK TAMER WITH VELCRO BLACK	17.50
ACMSTBU	MASK TAMER WITH VELCRO BLUE	17.50
ACMSTLM	MASK TAMER WITH VELCRO LIME	17.50

**SILICONE MASK STRAPS**

		RRP
ACNEMSSBK	MASK STRAP SILICONE - BLACK	9.95
ACNEMSSCL	MASK STRAP SILICONE - CLEAR	9.95



NEOPRENE SLIDE ON MASK STRAP		
		RRP
ACNEMSN	MASK STRAP NEPTUNE SLIDE ON	17.50
FINS STRAPS / STRAP ASSEMBLIES		
		RRP
ACNESTFBA	FIN STRAP BUCKLE ASSEMBLY	17.95
ACNESTF	FIN STRAP	6.95
RUBBER QUICK RELEASE KNIFE STRAPS		
		RRP
ACNESTKQR	STRAP KNIFE QUICK RELEASE	12.95
RUBBER KNIFE STRAPS		
		RRP
ACNESTKR	STRAP KNIFE RUBBER	9.95
SNORKEL STRAPS		
		RRP
ACNESTLGE	SNORKEL STRAP LARGE	1.45
ACNESTSML	SNORKEL STRAPS SMALL	1.45
OCTOPUS NECK STRAP		
		RRP
ACNESTONLGE	STRAP OCTOPUS NECK LGE	29.95
BALL STYLE OCTOPUS HOLDER		
		RRP
ACNEOH	OCTOPUS HOLDER (BALL STYLE)	9.95
SILICONE OCTOPUS HOLDER		
		RRP
ACNEOHS	OCTOPUS HOLDER SIL.	4.95
HEAVY DUTY WETSUIT HANGER		
		RRP
ACNEHAHDBK	WETSUIT HANGER BLACK	19.95
ACNEHAHDYL	WETSUIT HANGER YELLOW	19.95
MULTI PURPOSE WETSUIT HANGER		
		RRP
ACNEHAMPBK	HANGER MULTI-PURPOSE	22.95
CYLINDER O-RING HOLDER		
		RRP
ACNECOH	CYLINDER O-RING HOLDER	12.95
ANTI FOG		
		RRP
ACNEFOG	ANTI FOG SOLUTION	11.95

**WEIGHT BELTS, WEIGHTS & COMPONENTS (Please note no Line Discount applies)****COMFO BELT WEIGHT BELT - STAINLESS STEEL BUCKLE**

	RRP
ACNEWBCPKT4 4 POCKET COMFO BELT	49.95
ACNEWBCPKT5 5 POCKET COMFO BELT	49.95
ACNEWBCPKT6 6 POCKET COMFO BELT	49.95
ACNEWBCPKT7 7 POCKET COMFO BELT	49.95

**WEBBING WEIGHT BELT - STAINLESS STEEL BUCKLE**

	RRP
ACNEWBSBK WEIGHTBELT S/S BLACK	29.95
ACNEWBSBU WEIGHTBELT S/S BLUE	29.95
ACNEWBSYL WEIGHTBELT S/S YELLOW	29.95

**WEBBING WEIGHT BELT - PLASTIC BUCKLE**

	RRP
ACNEWBPBK WEIGHTBELT PLASTIC BLACK	14.95
ACNEWBPBU WEIGHTBELT PLASTIC BLUE	14.95
ACNEWBPYL WEIGHTBELT PLASTIC YELLOW	14.95

**STAINLESS STEEL WEIGHT BELT BUCKLE**

	RRP
ACNEBS WEIGHT BELT BUCKLE S/STEEL	17.95

**PLASTIC WEIGHT BELT BUCKLE**

	RRP
ACNEBPBK WEIGHT BELT BUCKLE PLASTIC BK	7.95

**WEIGHT BELT WEIGHT KEEPER**

	RRP
ACNEWTK WEIGHT KEEPER	2.00

**WEIGHT BELT WEBBING**

	RRP
ACNEWWBK WEBBING PER METRE BLACK	6.95
ACNEWWBU WEBBING PER METRE BLUE	6.95
ACNEWBYL WEBBING PER METRE YELLOW	6.95

**NEW!****INGOT LEAD WEIGHTS**

	RRP
ACNELEAD1.0K 1.0KG INGOT LEAD WEIGHTS	12.95
ACNELEAD0.5K 0.5KG INGOT LEAD WEIGHTS	6.45

**NEW!****THREAD ON LEAD WEIGHTS**

	RRP
ACNELEAD3LB 3LB THREAD ON LEAD WEIGHTS	18.95

**NEPTUNE TOOLS & LUBRICANTS (Please note no Line Discount applies)**


LINE PRESSURE GAUGE		
		RRP
ACNEGALP	INTERMEDIATE LINE PRESSURE GAUGE	39.95



C SPANNER DIVERS TOOL		
		RRP
TLNECSN	C SPANNER NYLON TOOL	15.95



TANK PRESSURE TESTER		
		RRP
TLNEDTPT	TOOL DIN TANK PRESSURE TESTER	125.00



DIVERS FOLDING MULTI TOOL		
		RRP
TLNEFMT	TOOL FOLDING MULTI	34.95



BCD INFLATOR		
		RRP
TLNEINF	TOOL, NEPTUNE BCD INFLATOR	5.95



MASTER TOOL		
		RRP
TLNEM	TOOL MASTER	44.95



O-RING PICK SET BRASS (3 PACK)		
		RRP
TLNEOPB	TOOL O-RING PICK BRASS (3PK)	29.95



SCHRAEDER VALVE SERVICE TOOL		
		RRP
TLNESVS-01	TOOL SHRAEDER VALVE SERVICE	15.50



VALVE HANDLE SERVICE TOOL		
		RRP
TLNEVH	TOOL VALVE HANDLE SERVICE	15.50



DIVERS VICE TOOL		
		RRP
TLNEVM	VICE MOUNTING TOOL	44.95



**DIVERS WRENCH**

		RRP
TLNEW1	11/16 X 7/16 WRENCH	7.95
TLNEW2	5/8 X 1/2 WRENCH	7.95

**SILICONE GREASE**

		RRP
ACNESIG10	SILICONE GREASE 10ML	6.95
ACNESIG50	SILICONE GREASE 50ML	19.95

**CHRISTO-LUBE**

		RRP
ACNECLMCG111	2 OZ SYRINGE CHRISTO-LUBE 111	116.00

**ZIPPER LUBRICANT**

		RRP
ACNETZLUBE	T ZIP ZIPPER LUBRICANT 8GR	14.95

## JAWS CLEANING & CONDITIONING PRODUCTS

If you like to have fun in the water, JAWS has a solution for you. Whether it's the worlds most recognized antifog or one of a range of cleaning and conditioning products, JAWS offers solutions for a long list of water sports and aquatic activities.



### JAWSCLOTH MICROFIBER CLOTH

When you need spotless, speckless and streak-free... you need JAWSCloth!

	RRP
JAWS1788 JAWS MICROFIBER CLOTH	3.55



### SEESAFE 2-IN1 ANTI-FOG & CLEANER

Don't just see... SEEsafe!

	RRP
JAWS1789 ANTI-FOG/CLEANER 20Z / 60ML	15.95



### ECOGUARD SILICONE CONCENTRATE

Silicone with an conscience...

	RRP
JAWS1791CON SILICONE CONCENTRATE 10Z / 30ML	9.95



### ECOGUARD SILICONE SPRAY

Silicone with an conscience...

	RRP
JAWS1791SRAY SILICONE SPRAY 40Z / 120ML	14.95



### SPITCLIP RETAINER

CLIP it... or forget it!

	RRP
JAWS1794 FITS ALL 10Z/30ML BOTTLES	8.95



### SPIT ANTIFOG GEL

The most recognized antifog in the world... see what you're missing!

	RRP
JAWS1795 ANTIFOG GEL 10Z / 30ML	9.95



### QUICK SPIT ANTIFOG - SPRAY FORMULA

The most recognised antifog in the world... finally, a spray that works!

	RRP
JAWS1796 ANTIFOG SPRAY 10Z / 30ML	12.95



### SCRUB MASK & SLATE CLEANER

Don't just clean it... scrub it!

	RRP
JAWS1797 CLEANER 10Z / 30ML	9.95



### SLOSH WETSUIT SHAMPOO

Don't just wash it... slosh it!

	RRP
JAWS1798 WETSUIT SHAMPOO 40Z / 120ML	12.95

**SURFACE MARKER SIGNALLING****SURFACE MARKER WEBBING DEPLOYMENT SYSTEM**

		RRP
ACSUWDS	WEBBING DEPLOYMENT SYSTEM	129.95

**SURFACE MARKER SIGNAL MIRROR**

		RRP
ACSUSM	SIGNAL MIRROR	29.95

**SURFACE MARKER LIFT BAGS**

		RRP
ACSM LB25R	25KG 78CM X 58CM RED	189.95
ACSM LB25Y	25KG 78CM X 58CM YELLOW	189.95
ACSM LB65R	65KG 101CM X 73CM RED	199.95
ACSM LB65Y	65KG 101CM X 73CM YELLOW	199.95

**NEPTUNE MASKS**


M8 MASK		
		RRP
MKNEM8BKBK	BLACK SILICONE BLACK	99.95
MKNEM8PK	CLEAR SILICONE PINK	99.95
MKNEM8RD	CLEAR SILICONE RED	99.95



M8L MASK		
		RRP
MKNEM8LBKBK	BLACK SILICONE BLACK	99.95
MKNEM8LBU	CLEAR SILICONE BLUE	99.95
MKNEM8LPK	CLEAR SILICONE PINK	99.95
MKNEM8LRD	CLEAR SILICONE RED	99.95



ELEMENT MASK		
		RRP
MKNEE8BKBK	BLACK SILICONE BLACK	79.95



OSPREY MASK		
		RRP
MKNE0SPBKBK	BLACK SILICONE BLACK	79.95
MKNE0SPCLRD	CLEAR SILICONE RED	79.95
MKNE0SPCLBU	CLEAR SILICONE BLUE	79.95



SIGHT MASK		
		RRP
MKNESISBKBK	BLACK SILICONE BLACK	79.95
MKNESISBKRD	BLACK SILICONE RED	79.95
MKNESISBKBU	BLACK SILICONE BLUE	79.95



SIGNATURE MASK		
		RRP
MKNESIGBKMB	BLACK SILICONE METALLIC BLUE	79.95
MKNESIGBKRD	BLACK SILICONE RED	79.95
MKNESIGBKSL	BLACK SILICONE SILVER	79.95
MKNESIGCLMB	CLEAR SILICONE METALLIC BLUE	79.95
MKNESIGCLRD	CLEAR SILICONE RED	79.95
MKNESIGCLSL	CLEAR SILICONE SILVER	79.95



FLEET MASK		
		RRP
MKNEFLEBKBK	MASK NEPTUNE FLEET BK SIL. BK	49.95
MKNEFLEBKBU	MASK NEPTUNE FLEET BK SIL. BU	49.95
MKNEFLEBKYL	MASK NEPTUNE FLEET BK SIL. YL	49.95
MKNEFLECLBK	MASK NEPTUNE FLEET CL SIL. BK	49.95
MKNEFLECLBU	MASK NEPTUNE FLEET CL SIL. BU	49.95

**NEPTUNE SNORKELS****FLOW SNORKEL**

	RRP
SNNEFLSBKKBK BLACK SILICONE BLACK	59.95
SNNEFLSBKBU BLACK SILICONE RED	59.95
SNNEFLSBKRD BLACK SILICONE BLUE	59.95

**ARGON SNORKEL**

	RRP
SNNEARGBKMB BLACK SILICONE METALLIC BLUE	49.95
SNNEARGBKRD BLACK SILICONE RED	49.95
SNNEARGBKSL BLACK SILICONE SILVER	49.95
SNNEARGCLMB CLEAR SILICONE METALLIC BLUE	49.95
SNNEARGCLRD CLEAR SILICONE RED	49.95
SNNEARGCLSL CLEAR SILICONE SILVER	49.95

**FLEX SNORKEL**

	RRP
SNNEFLXBKKBK SNORKEL FLEX BK SIL. BK	39.95
SNNEFLXCLBU SNORKEL FLEX CL SIL. BU	39.95

**FLEET SNORKEL**

	RRP
SNNEFLECLBK CLEAR SILICONE BLACK	29.95
SNNEFLECLYL CLEAR SILICONE YELLOW	29.95
SNNEFLECLBU CLEAR SILICONE BLUE	29.95

**FREEDIVER SNORKEL**

	RRP
SNPSFRE SNORKEL FREEDIVER BK	32.95

**NEPTUNE PVC MASK & SNORKEL COMBOS****ESCAPE ADULT COMBO**

	RRP
STNEESSCBU COMBO ESCAPE SNR PVC BU	39.99
STNEESSCYL COMBO ESCAPE SNR PVC YL	39.99

**KING NEPTUNE JUNIOR COMBO**

	RRP
STNEKNJCBU KING NEPTUNE JR PVC BLUE	29.99
STNEKNJCGR KING NEPTUNE JR PVC GREEN	29.99
STNEKNJCPU KING NEPTUNE JR PVC PURPLE	29.99
STNEKNJCPK KING NEPTUNE JR PVC PINK	29.99



## NEPTUNE SILICONE MASK & SNORKEL COMBOS



### NORFOLK ADULT COMBO

		RRP
STNENOSCBK	NORFOLK SNR SILICONE BLACK	49.99
STNENOSCBU	NORFOLK SNR SILICONE BLUE	49.99
STNENOSCPK	NORFOLK SNR SILICONE PINK	49.99

### NORFOLK JUNIOR COMBO

		RRP
STNENOJCBU	NORFOLK JR SILICONE BLUE	45.99
STNENOJCPK	NORFOLK JR SILICONE PINK	45.99

## NEPTUNE PVC MASK, SNORKEL & FIN SETS



### ESCAPE ADULT SET

		RRP
STNEESSBU	SET ESCAPE SNR PVC BLUE	69.99
Sizes - S-M, M-L, L-XL		

### KING NEPTUNE JUNIOR SET

		RRP
STNEKNJSBU	KING NEPTUNE JR PVC BLUE	49.99
STNEKNJSGR	KING NEPTUNE JR PVC GREEN	49.99
STNEKNJSPU	KING NEPTUNE JR PVC PURPLE	49.99
STNEKNJSPK	KING NEPTUNE JR PVC PINK	49.99

## NEPTUNE SILICONE MASK, SNORKEL & FIN SETS



### NORFOLK ADULT SET

		RRP
STNENOSSBK	NORFOLK SNR SILICONE BLACK	99.99
STNENOSSBU	NORFOLK SNR SILICONE BLUE	99.99
STNENOSSPK	NORFOLK SNR SILICONE PINK	99.99
Sizes - SML, MED, LGE		

### NORFOLK JUNIOR SET

		RRP
STNENOJSBU	NORFOLK JR SILICONE BLUE	79.99
STNENOJSPK	NORFOLK JR SILICONE PINK	79.99
Sizes - XXS, XSM		



**NEPTUNE WETSUIT SIZE CHART**

MENS MEASUREMENTS														
SIZE	3-	3	3+	4-	4	4+	5-	5	5+	6-	6	6+	7-	7
HEIGHT (cm)	167-175			172-180			177-185			182-190			187-195	
HEIGHT (inches)	5'6"-5'9"			5'8"-5'11"			5'10"-6'1"			6'-6'3"			6'2"-6'5"	
CHEST (cm)	90.1	96.5	102.9	96.5	102.9	109.2	102.9	109.2	115.6	109.2	115.6	122	115.6	122
CHEST (inches)	35 1/2"	38"	40 1/2"	38"	40 1/2"	43"	40 1/2"	43"	45 1/2"	43"	45 1/2"	48"	45 1/2"	48"
WAIST (cm)	77.5	83.8	90.1	83.8	90.1	96.5	90.1	96.5	102.9	96.5	102.9	109	102.9	109
WAIST (inches)	30 1/2"	33"	35 1/2"	33"	35 1/2"	38"	35 1/2"	38"	40 1/2"	38"	40 1/2"	43"	40 1/2"	43"
HIPS (cm)	90.1	96.5	102.9	96.5	102.9	109.2	102.9	109.2	115.6	109.2	115.6	122	115.6	122
HIPS (inches)	35 1/2"	38"	40 1/2"	38"	40 1/2"	43"	40 1/2"	43"	45 1/2"	43"	45 1/2"	48"	45 1/2"	48"

WOMENS MEASUREMENTS														
SIZE	8	8+	10-	10	10+	12-	12	12+	14-	14	14+	16-	16	16+
HEIGHT (cm)	152-160		157-165			162-170			167-175			172-180		
HEIGHT (inches)	5'-5'3"		5'2"-5'5"			5'4"-5'7"			5'6"-5'9"			5'8"-5'11"		
CHEST (cm)	81.5	87.5	81.5	87.5	94	87.5	94	100.5	94	100.5	106.5	100.5	106.5	113
CHEST (inches)	32"	34 1/2"	32"	37"	34 1/2"	34 1/2"	37"	39 1/2"	37"	39 1/2"	42"	39 1/2"	42"	44 1/2"
WAIST (cm)	61	67	61	67	73.5	67	73.5	80	73.5	80	86.5	80	86.5	92.5
WAIST (inches)	24"	26 1/2"	24"	26 1/2"	29"	26 1/2"	29"	31 1/2"	29"	31 1/2"	34"	31 1/2"	34"	36 1/2"
HIPS (cm)	84	90	84	90	96.5	90	96.5	103	96.5	103	109	103	109	115.5
HIPS (inches)	33"	35 1/2"	33"	35 1/2"	38"	35 1/2"	38"	40 1/2"	38"	40 1/2"	43"	40 1/2"	43"	45 1/2"

This is only a guide. It is recommended to be fitted by your local retailer to ensure you get the most from your wetsuit.

# MTM/SIZE CHECK FORM

DEALER: \_\_\_\_\_ CUSTOMER NAME: \_\_\_\_\_

CUSTOMER PHONE: \_\_\_\_\_

## INSTRUCTIONS FOR MEASURING

1. Have another person measure you
2. Use an unworn measuring tape
3. Measure over a bathing suit only

4. Stand straight & in a relaxed position
5. Pull tape snug - not tight
6. Circumference measurements taken around widest point
7. See instructions attached

A \_\_\_\_\_ mm \_\_\_\_\_ inches HEIGHT

B \_\_\_\_\_ kg WEIGHT

C \_\_\_\_\_ mm \_\_\_\_\_ inches FOREHEAD (circumference at eyebrow level)

D \_\_\_\_\_ mm \_\_\_\_\_ inches NECK (circumference)

E \_\_\_\_\_ mm \_\_\_\_\_ inches NECK TO SHOULDER

F \_\_\_\_\_ mm \_\_\_\_\_ inches SHOULDER TO WRIST

G \_\_\_\_\_ mm \_\_\_\_\_ inches WRIST TO ELBOW

H \_\_\_\_\_ mm \_\_\_\_\_ inches BICEPS (circumference when relaxed)

I \_\_\_\_\_ mm \_\_\_\_\_ inches FOREARM (circumference at thickest point)

J \_\_\_\_\_ mm \_\_\_\_\_ inches WRIST (circumference)

K \_\_\_\_\_ mm \_\_\_\_\_ inches CHEST (circumference)

L \_\_\_\_\_ mm \_\_\_\_\_ inches WAIST (circumference)

M \_\_\_\_\_ mm \_\_\_\_\_ inches HIPS (circumference around largest part of seat)

N \_\_\_\_\_ mm \_\_\_\_\_ inches THIGH (circumference at crotch)

O \_\_\_\_\_ mm \_\_\_\_\_ inches ABOVE KNEE (circumference)

P \_\_\_\_\_ mm \_\_\_\_\_ inches BELOW KNEE (circumference at narrowest point)

Q \_\_\_\_\_ mm \_\_\_\_\_ inches CALF (circumference at widest point)

R \_\_\_\_\_ mm \_\_\_\_\_ inches CALF TO ANKLE (circumference)

S \_\_\_\_\_ mm \_\_\_\_\_ inches ANKLE (circumference)

T \_\_\_\_\_ mm \_\_\_\_\_ inches CROTCH TO CENTRE KNEE

U \_\_\_\_\_ mm \_\_\_\_\_ inches CROTCH TO ANKLE

V \_\_\_\_\_ mm \_\_\_\_\_ inches BASE OF NECK TO CROTCH (FRONT) (collar bone - inside leg)

W \_\_\_\_\_ mm \_\_\_\_\_ inches BASE OF NECK TO CROTCH (BACK)

X \_\_\_\_\_ mm \_\_\_\_\_ inches FULL LENGTH OF BODY FROM FRONT TO BACK (One continuous measurement taken from the base of the neck through center of crotch up the back to nape of neck)

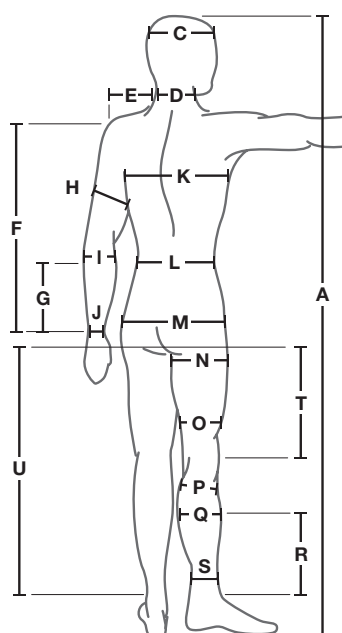
## EXTRA MEASUREMENTS FOR WOMEN

A1 \_\_\_\_\_ mm \_\_\_\_\_ inches SHOULDER TO TIP OF BUST

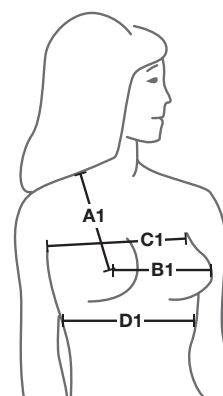
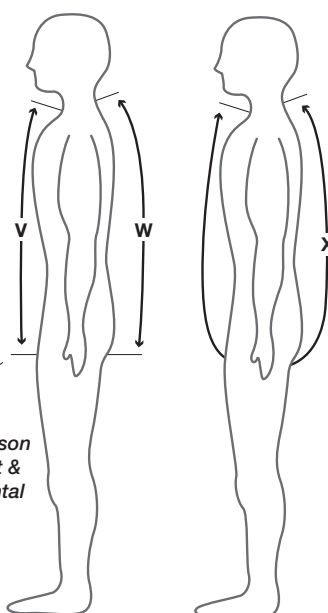
B1 \_\_\_\_\_ mm \_\_\_\_\_ inches TIP TO TIP

C1 \_\_\_\_\_ mm \_\_\_\_\_ inches ABOVE BUST (circumference)

D1 \_\_\_\_\_ mm \_\_\_\_\_ inches BELOW BUST (circumference)



Note:  
Make sure person stands straight & ruler is horizontal



## MTM HOW TO MEASURE INSTRUCTIONS

**Before You Start** - The person that you are measuring should be wearing reasonably close fitting clothing. They should not be wearing belts, jackets or shoes and their pockets should be empty.

**When Measuring** - Using a proper tailor's tape measure all measurements should be "neat" i.e. not so tight as to depress the skin. Make certain that clothing is not gathered under the tape as this can give incorrect readings.

**Record the measurements on the form** - Print clearly using BLACK pen.

### Use the following instructions in conjunction with the illustrations on the MTM form

**A** - Measurement A should be taken barefoot. The easiest way to get this measurement is for the customer to stand with their heels against a wall and look straight ahead. Make a small mark on the wall level with the tallest part of their head then have them step away so you can take the measurement.

**B** - The weight of the customer should be taken in kilograms.

**C** - This measurement is required for hood attached suits ONLY. Measurement is taken just above eyebrow level. Ensure that the tape is horizontal.

**D** - Taken just below the Adam's apple. Take measurement with one small finger under the tape to allow for a comfortable fit.

**E** - First determine where the suit ends. Keep arm at side relaxed and measure from the neck to the edge of the shoulder.

**F** - This measurement will determine where the suit ends. Keep arm at side, straight and relaxed. Take measurement from shoulder to the customer's rear wrist knuckle.

**G** - Hold arm at a slight angle. Take measurement from the tip of the elbow to the rear wrist knuckle.

**H** - Hold arm by side relaxed. Take measurement neat at mid bicep.

**I** - This measurement is taken with the arm relaxed at the widest part below the elbow.

**J** - Measurement taken at sleeve end i.e. at the wrist knuckle.

**K** - Have the customer lift their arms. Place tape around the chest/bust at nipple level. Have the customer lower their arms then check that the tape is horizontal front and back before taking the measurement. Measurement is taken relaxed - not with chest expanded.

**L** - This measurement should really be called a "stomach" measurement. Measurement is taken at the largest part of the waist/stomach. The easiest way to do this is find the waist point on the customer's back and then make sure the tape is horizontal as you measure around the stomach to the front.

**M** - Have the customer stand at 90 degrees to you when taking this measurement. Look for the widest part of the seat (bum) and measure ensuring that the tape is horizontal.

**N** - Make sure trousers are held tight. This measurement of the upper thigh is taken at crotch level. Ensure that the tape is horizontal and is not over lower buttocks.

**O** - Make sure that trousers are held tight. This measurement is taken 3 inches (about four fingers) above the knee-cap. Ensure the tape is kept horizontal.

**P** - Make sure that the trousers are held tight or pulled up. This is a measurement taken just below the knee-cap at the narrowest point. Ensure the tape is held horizontal.

**Q** - Make sure that trousers are held tight or pulled up. Take measurement at widest point (mark this point on the inside of the calf for the next measurement). Ensure that tape is horizontal.

**R** - Measure from marked point (above) to the inside knuckle bone of the ankle.

**S** - Measure just above the knuckle bone. Ensure tape is horizontal.

**T** - Pull trousers tight up to crotch. Place a ruler between legs right at crotch level. Have the customer stand up straight with feet shoulder width apart, looking straight ahead. Take measurement from top edge of the ruler as close to the body as possible, down the inside of the leg to the top of the side of the knee-cap. Take this measurement with the customer side-on to ensure that the ruler is kept level.

**U** - While the customer is maintaining the above position take this measurement from the same starting point and continue down to the inside ankle knuckle.

**V** - While the customer is maintaining the above position, measure from the soft point just above the collar bone joint down the body to the top edge of the ruler as close to the body as possible. Ensure that the ruler is kept level.

**W** - While the customer is maintaining the above position, measure from the top vertebrae joint of the spinal column to the top edge of the ruler as close to the body as possible. Ensure that the ruler is kept level.

**X** - Pull trousers tight up into crotch. Measure from the same point to the same rear point as outlined in the last two measurements.

**Additional Measurements for Women** - These measurements are taken most accurately wearing a swim top. Push-up or padded bras will give incorrect readings.

**A1** - Taken from the top of the shoulder to the nipple.

**B1** - Taken from nipple to nipple.

**C1** - This measurement is taken high up under the armpits, and as high as possible above the main bust whilst still being horizontal.

**D1** - This measurement is taken directly below the bust. Ensure that the tape is horizontal.