

2015 APEKS CATALOGUE



apeks®
TECHNICALLY INSPIRED

CONTENTS

REGULATORS	7
GAUGES	18
BOUYANCY CONTROL DEVICES	21
FINS	29
SPOOLS	31
DRY WEAR	32
DRY BAGS	34
TEAM AND PROJECTS	36



EXT DIVE TEST
DAY FRIDAY 30TH
MAY!





WHERE THE ENVIRONMENT DEMANDS

APEKS COMMANDS

Apeks Marine Equipment Ltd began manufacturing 40 years ago with one goal - to make the best diving equipment in the world.

Our strengths in design, development and engineering craftsmanship produce equipment of such a high standard that they are now the benchmark others strive for. We make more regulators for UK divers than any other manufacturer and export more than 85% of our equipment around the globe.

Synonymous with extreme diving, Apeks products are pushed to the max by technical divers around the world. From caves to wrecks, extreme cold water to the darkest depths, Apeks regulators out-perform and exceed recognised standards in diving.

The full range of Apeks dive equipment, which now includes regulators, bladders, instruments and accessories, has been adopted by technical divers around the world. Apeks equipment is being used to explore some of the most advanced dive environments on earth. Because when the environment demands, only one thing matters; that your dive kit is designed, developed and tested to keep you safe and comfortable.





Image: Adam Hanlon

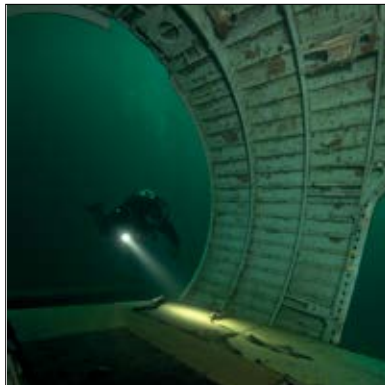


Image: Brett Thorpe



Image: diversoftedat.com

EN250:2014 INCLUDING ANNEX A

Apeks regulators are some of the safest around and regularly top independent tests for build quality, ease of breathing and their performance in extreme conditions, whether that be depth or temperature.

The Apeks XTX range of regulators are the world's first regulators designed to exceed the European standard in Auxiliary Emergency Breathing Systems. More officially known as EN250:2014 including annex A, it's a bit of a mouthful. But it's important.

An Auxiliary Emergency Breathing System (commonly known as an Octopus or alternate air source when connected to the primary regulator) is a fundamental part of any diver's kit, providing an emergency backup demand valve in case of primary demand valve failure and acting as an alternative source of air for a dive buddy.

The new standard only requires an alternate air source to be tested to 30 metres (98ft).

Apeks recognises that emergencies can happen beyond these limits and we are the first regulator manufacturer in the world to design, have independently tested and be awarded CE approval for alternate air source products which far exceed the minimum requirements of EN250:2014 including Annex A.

This means that an Apeks alternate air source matches the performance of the primary demand regulator that it is intended to work with, tested to depths of 50 metres (164ft) and in water temperatures below 10°C (50°F) where stated.

You can be confident that in an emergency or an out of air situation, your Apeks regulator can cope with the extra demand of your buddy breathing from your alternate air source and safely supply air to you both.

NORSOK ACCREDITATION

You are at 200 metres on a wreck. Then again you might not be, but it's nice to know that Apeks regulators are extensively tested to perform at those depths and beyond.

The NORSOK Standard U-101 accreditation is a demanding standard that was devised for equipment used by commercial divers in the petroleum industry. The regulators are tested to 200m using a Heliox gas blend.

Apeks makes three of only four regulators in the world that meet the NORSOK standard, the TEK3, XTX200 and XTX50. So whether you are at 20m or 200m, you know which brand you can trust.



LIMITED EDITION!

APEKS BLACK SAPPHIRE

The Black Sapphire is a piece of Apeks diving history, a limited-edition anniversary regulator celebrating 40 years of technical excellence and precision-engineering.

With new styling across both the first and second stages, the Black Sapphire features a precision-machined aircraft grade anodised metal front cover, which retains the crafted machining marks created during its production. The first stage has a super-tough and luxurious Physical Vapour Deposition (PVD) coating and features five ports as standard to allow for flexible hose routing.

- > Available in Yoke or DIN configuration.
- > Precision-machined and aircraft grade anodised metal front cover.
- > Luxury hard-wearing PVD finish on the first stage.
- > 5 ports with heat exchanger as standard.
- > Reversible second stage can be converted from a right-handed hose configuration to a left-handed hose configuration and can mount to either side of the first stage.
- > The carbon-coloured hose features a swivel joint on both the first and second stage for maximum comfort and range of movement.
- > Hydrostatic over-balancing first stage allows the medium pressure air in the hose to increase at a rate faster than ambient pressure, resulting in superior performance at depth.
- > Comes as standard with an environmental dry seal kit which keeps water and contaminants out as well as making the model more resistant to freezing.
- > Features the innovative Diver Changeable Exhaust (DCE) system allowing the diver to change from a large air exhaust to a smaller air exhaust. The larger exhaust provides the best exhaust bubble dispersion while the smaller exhaust is lightweight and compact. Both are included with the regulator.
- > A two-stage progressive dual purge to allow the diver to choose the flow rate of the purge.
- > The pneumatically balanced second stage has diver-adjustable controls that allow the diver to individually tailor the breathe of the regulator to meet his or her needs.
- > Suitable for cold water use (below 10c / 50F).



Connections	DIN and Yoke
Type of first stage	Over-balanced, environmentally sealed
Body type	One piece forged body
Number of HP ports	2 (7/16" UNF)
Number of MP ports	5 (3/8" UNF)
Environmental dry kit	Standard
First stage exterior	Physical Vapor Deposition (PVD) Coating

Orientation	Convertible LH or RH
Cold water use	Yes
Type of second stage	Pneumatically balanced
Opening effort control knob	Yes
Integrated Venturi lever	Yes
Mouthpiece	Comfo-bite™
Exhaust tee	Diver Changeable - comes with 2 sets

Heat exchanger for freezing resistance	Yes, plus 5th port heat exchanger as standard
Hose type	Braided flexi-hose
Overall work of breathing (WOB) scores	Avg. 0.70 joules/litre



XTX200

The XTX200 is the definitive blend of style and high performance. Every detail has been carefully designed to offer a high quality piece of equipment.

- > Uses the FSR first stage.
- > Chrome finish.
- > Optional 5th port with heat exchanger.
- > Removable seat valve.
- > All medium pressure ports are now 3/8" so that the reversible second stage can mount to either side of the first stage.
- > Hydrostatic over-balancing first stage allows the medium pressure air in the hose to increase at a rate faster than ambient pressure resulting in superior performance.
- > Comes standard with an environmental dry kit which keeps water and contaminants out as well as makes the model more resistant to freezing.
- > Features the innovative Diver Changeable Exhaust (DCE) system allowing the diver to change from a large exhaust tee to a smaller exhaust tee. The larger exhaust tee provides the best exhaust bubble dispersion while the smaller tee is lighter-weight and compact, both are included with the regulator.
- > Can be converted from a right-handed hose configuration to a left-handed configuration.
- > Two-stage progressive dual purge.
- > The pneumatically balanced second stage has diver-adjustable controls that allow the diver to individually tailor the breathe of the regulator to meet each dive's needs.
- > The ergonomic venturi lever has been designed to reduce the amount of grit ingress.
- > Available in yoke or DIN configuration.
- > Suitable for cold water use (below 10c / 50F).

Connections	DIN and Yoke
Type of first stage	Over-balanced, environmentally sealed
Body type	One piece forged body
Number of HP ports	2 (7/16" UNF)
Number of MP ports	4 with 5th port option (3/8" UNF)
Environmental dry kit	Standard
First stage exterior	Chrome over marine brass

Orientation	Convertible LH or RH
Cold water use	Yes
Type of second stage	Pneumatically balanced
Opening effort control knob	Yes
Integrated Venturi lever	Yes
Mouthpiece	Comfo-bite™
Exhaust tee	Diver Changeable - comes with 2 sets

Heat exchanger for freezing resistance	Yes
Hose type	Braided flexi-hose
Overall work of breathing (WOB) scores	Avg. 0.70 joules/litre



XTX50

The XTX50 is for the diver who wants the benefits of a feature-rich regulator at a moderate price.

- > Uses the DST first stage with four medium-pressure ports all mounted on a rotating turret. This results in optimal hose routing while eliminating sharp bends in the hose.
- > Optional 5th port.
- > All medium pressure ports are now 3/8" so that the reversible second stage can mount to either side of the first stage.
- > Hydrostatic over-balancing first stage allows the medium pressure air in the hose to increase at a rate faster than ambient pressure resulting in superior performance.
- > Comes standard with an environmental dry kit which keeps water and contaminants out as well as makes the model more resistant to freezing.
- > Features the innovative Diver Changeable Exhaust (DCE) system allowing the diver to change from a large exhaust tee to a smaller exhaust tee. The larger exhaust tee provides the best exhaust bubble dispersion while the smaller tee is lighter weight and compact, both are included with the regulator.
- > Can be converted from a right-handed hose configuration to a left-handed configuration.
- > Two-stage progressive dual purge.
- > The pneumatically balanced second stage has diver-adjustable controls that allow the diver to individually tailor the breathe of the regulator to meet each dive's needs.
- > The ergonomic venturi lever has been designed to reduce the amount of grit ingress.
- > Available in yoke or DIN configuration.
- > Suitable for cold water use (below 10c / 50F).



Connections	DIN and Yoke
Type of first stage	Over-balanced, environmentally sealed
Body type	MP ports mounted on swivel turret
Number of HP ports	2 (7/16" UNF)
Number of MP ports	4 with 5th port option (3/8" UNF)
Environmental dry kit	Standard
First stage exterior	Chrome over marine brass

Orientation	Convertible LH or RH
Cold water use	Yes
Type of second stage	Pneumatically balanced
Opening effort control knob	Yes
Integrated Venturi lever	Yes
Mouthpiece	Comfo-bite™
Exhaust tee	Diver Changeable - comes with 2 sets

Heat exchanger for freezing resistance	Yes
Hose type	Braided flexi-hose
Overall work of breathing (WOB) scores	Avg. 0.70 joules/litre



XTX20 (WARM WATER ONLY)

This regulator has the performance of the XTX40, without the cold water features, it is well suited for warm water conditions and the price makes it exceptional value.

- > Uses the UST first stage.
- > Optional 5th port.
- > The pneumatically balanced second stage has left/right reversibility and a Diver Changeable Exhaust (DCE) system. Only the compact exhaust tee is supplied.
- > Integrated venturi control.
- > Designed for water above 10° C (50° F).



NITROX XTX50

The Nitrox XTX50 regulator is for the diver who wants the benefits of a feature-rich regulator at a moderate price.

- > Uses the DST first stage with four medium-pressure ports all mounted on a rotating turret. This results in optimal hose routing while eliminating sharp bends in the hose.
- > Optional 5th port.
- > All medium pressure ports are now 3/8" so that the reversible second stage can mount to either side of the first stage.
- > Hydrostatic over-balancing first stage allows the medium pressure air in the hose to increase at a rate faster than ambient pressure resulting in superior performance.
- > Comes standard with an environmental dry kit which keeps water and contaminants out as well as makes the model more resistant to freezing.
- > Can be converted from a right-handed hose configuration to a left-handed configuration.
- > Two-stage progressive dual purge.
- > The pneumatically balanced second stage has diver-adjustable controls that allow the diver to individually tailor the breathe of the regulator to meet each dive's needs.
- > The ergonomic venturi lever has been designed to reduce the amount of grit ingress.
- > Available in yoke or DIN configuration.
- > Suitable for cold water use (below 10c / 50F).



SIDEMOUNT REGULATOR KIT

The Apeks sidemount regulator kit delivers the necessary hardware and accessories for sidemount diving, along with two award-winning XTX50 regulators.

KIT CONTENTS:

- > 2 ea. XTX50 DIN regulators using the DST first stage with a swivel turret and 5th port.
- > One XTX50 has a 210cm hose.
- > One XTX50 has a 65cm hose.
- > 2 ea. 20cm length MP inflation hoses (one for buoyancy system, one for drysuit).
- > 2 ea. brass pressure gauges with 18cm hoses.
- > 1 ea. 90° elbow fitting.
- > 1 ea. bungee necklace.
- > 1 ea. stainless steel bolt snap.
- > 2 sets of short exhaust ports.
- > Regulator bag to hold everything.
- > Setup illustration, CD manual and a quick start guide.
- > Suitable for cold water use (below 10c / 50F).



Connections	DIN only
Type of first stage	Over-balanced, environmentally sealed
Body type	Cylindrical, MP ports mounted on swivel turret
Number of HP ports	2 (7/16" UNF)
Number of MP ports	5 (3/8" UNF)
Environmental dry kit	Standard
First stage exterior	Chrome over marine brass

Orientation	Convertible LH or RH
Cold water use	Yes
Type of second stage	Pneumatically balanced
Opening effort control knob	Yes
Integrated Venturi lever	Yes
Mouthpiece	Comfo-bite™
Exhaust tee	Diver Changeable - comes with 2 sets

Heat exchanger for freezing resistance	Yes
Hose type	Braided flexi-hose
Overall work of breathing (WOB) scores	Avg. 0.70 joules/litre
Submersible pressure gauges	Nickel plated brass housings
Gauge face	Anti-splinter polycarbonate
Over-pressure relief on back	Yes



TEK3 REGULATOR SET

Apeks has developed unique first stages specifically for use on a twinset. Each first stage has three medium pressure ports and one high pressure port. They are hydrostatically over-balanced, cold water compatible and extremely robust. The TEK3 is equally suitable for single cylinder or stage cylinder configurations, offering perfect snag-free hose positioning.

For those that already own two Apeks regulators, the TEK3 set is also available without second stages.

- > Set includes two XTX50 second stages (the set can be used with all XTX second stages).
- > The TEK3 utilizes all of the proven technology contained within the Apeks range of first stage regulators.
- > Incorporates three medium pressure 3/8" UNF ports and one high pressure 7/16" UNF port. The ports are arranged so as to give a neat streamlined hose configuration as desired by the technical diver.
- > Allows maximum unrestricted accessibility to the cylinder valves when using a twin cylinder set up.
- > Only available in DIN fitting.
- > Suitable for cold water use (below 10c / 50F).

Connections	DIN only
Type of first stage	Over-balanced, environmentally sealed
Body type	Compact, solid one piece body
Number of HP ports	1 (7/16" UNF)
Number of MP ports	3 (3/8" UNF)
Environmental dry kit	Standard
First stage exterior	Chrome over marine brass

Orientation	Convertible LH or RH
Cold water use	Yes
Type of second stage	Pneumatically balanced
Opening effort control knob	Yes
Integrated Venturi lever	Yes
Mouthpiece	Comfo-bite™
Exhaust tee	Diver Changeable - comes with 2 sets

Heat exchanger for freezing resistance	Yes
Hose type	Braided flexi-hose
Overall work of breathing (WOB) scores	Avg. 0.70 joules/litre



XTX50 OCTOPUS

- > This octopus is based on the XTX50 second stage.
- > It includes left / right reversibility, cold water capability and the performance you would expect from an Apeks pneumatically balanced valve.
- > Diver-adjustable venturi control and opening effort.
- > The unit has a high visibility yellow front cover, yellow accent pieces and a 36" yellow hose.
- > Suitable for cold water use (below 10c / 50F).



XTX40 OCTOPUS

- > This octopus is based on the XTX40 second stage.
- > It includes left / right reversibility, cold water capability and the performance you would expect from an Apeks pneumatically balanced valve.
- > Diver-adjustable venturi control.
- > The unit has a high visibility yellow front cover, yellow accent pieces and a 36" yellow hose.
- > Suitable for cold water use (below 10c / 50F).



XTX20 OCTOPUS

- > This octopus is based on the XTX20 second stage.
- > It includes left / right reversibility and the performance you would expect from an Apeks pneumatically balanced valve.
- > Diver-adjustable venturi control.
- > The unit has a high visibility yellow front cover, yellow accent pieces and a 36" yellow hose.
- > Designed for water temperatures above 50° F (10° C).





REGULATOR SETS

XTX200/40 REG SET

- > Combines the XTX200 first and second stage with a XTX40 occi.
- > See pages 9 and 14 for item specifics.
- > Suitable for cold water use (below 10c / 50F).
- > Available in yoke or DIN.
- > comes with FREE REG BAG



XTX50/40 REG SET

- > Combines the XTX50 first and second stage with a XTX40 occi.
- > See pages 10 and 14 for item specifics.
- > Suitable for cold water use (below 10c / 50F).
- > Available in yoke or DIN.



XTX20/20 REG SET

- > Combines the XTX2 first and second stage with a XTX20 occi.
- > See pages 11 and 14 for item specifics.
- > Designed for water above 10° C (50° F).
- > Available in yoke only.



DIN TO YOKE CONVERTER

- > An adapter used to convert a male DIN fitting on a regulator to a standard yoke style fitting on a cylinder
- > Essential accessory for today's travelling diver
- > No need for tools
- > Precision Apeks machining and quality control procedures
- > Suitable for cold water use (below 10c / 50F).
- > Also available in a permanent version.



Non-permanent version

YOKE TO DIN CONVERTER

Allows you to replace your existing yoke connector with a din connector.

- > Available in co-molded, bright chrome or satin finish
- > The installation of this item must be done by an Apeks authorized technician.



co-molded



bright chrome



satin

5-PORT UPGRADE KIT

This kit is only suitable for the current (post-September 2012) XTX200 and XTX100 first stages (FSR and FST type).

- > Allows for hose routing options that can be advantageous when mounting the first stage to twin cylinders.
- > Heat exchanger helps resist freezing in cold water.



5-port upgrade kit

5-PORT TURRET UPGRADE KIT

This kit is suitable for the XTX50 & XTX40 regulator 1st stages (DST type).

- > Allows for a new hose routing option which can be advantageous when mounting the first stage to twin cylinders.



5-port turret upgrade kit

HOSES AND MOUTHPIECES

- > Regulator hose, flexi black (3/8) (29")
- > Regulator hose, flexi black (3/8) (29') ball joint
- > Regulator hose, flexi black (3/8) (2.1m)
- > Regulator hose, flexi yellow (3/8) (36")
- > Sidemount inflator hose, black (3/8) (8')
- > High pressure hose, carbon flexi (7/16) (800mm)
- > High pressure hose, (7/16) (8")
- > Apeks comfobite mouthpiece



Ball joint





ANALOG INSTRUMENTS

Apeks instruments supply clear and accurate information on your dive status. Our instruments are tested beyond normal dive limits to ensure they provide this precise information for all your dive experiences. Strong, easy to maintain housings provide years of trouble free service.

PRESSURE GAUGE CONSOLE

- > Available with or without hose and boot.
- > The slim-line gauge case is made from nickel plated brass.
- > Large loop area designed into the housing for ease of attachment.
- > The dial range is from 0 to 360 bar.
- > Uncluttered, with large black figures on a luminous background giving a long phosphorescent effect.
- > Made with O2 compatible materials but be sure to O2 clean before use with high percentage oxygen.
- > The dial window is made of highly shock resistant material (anti-splinter Polycarbonate).
- > Over pressure relief capsule fitted in the back.
- > Standard with carbon flexi hose.

PRESSURE GAUGE + COMPASS CONSOLE

- > Contents gauge above plus a compass.
- > This unique compass is designed for ease of reading and diver comfort. For example, there are two viewing windows so the unit can be set up for left or right handed use at an angle which is set as the natural extension of the arm. This means divers do not have to twist their wrist into an unnatural shape to view compass readings.
- > The ratchet bezel is robust and can be rotated with ease even with thick neoprene gloves.
- > The numbers and directions on the bezel are large and very easy to read.
- > Standard with carbon flexi hose.



Without hose and boot



PRESSURE GAUGE + DEPTH GAUGE CONSOLE

- > Contents gauge details above plus a depth gauge.
- > Dials have a long phosphorescent effect for better reading in poor visibility conditions.
- > There are 2 attachment areas integrated into the design for position flexibility.
- > This may be a compact design but the displays are vivid and clear - perfect for diving. For example, the depth gauge spreads the first half of the scale and in total shows a range down to 70 metres.
- > Depth gauge has resettable max depth indicator.
- > Made with high shock-resistant windows.
- > Standard with carbon flexi hose.

PRESSURE GAUGE + DEPTH GAUGE CONSOLE + COMPASS

- > See specifics on each individual instrument above and on previous page.
- > All instruments give accurate, clear readings and are made from the best quality build materials. As such they offer perfect functionality and excellent robustness.
- > Standard with carbon flexi hose.

MINIATURE PRESSURE GAUGE

The Miniature Pressure Gauge is a button pressure gauge measuring 23mm in diameter, designed to be fitted to redundant air supplies such as a pony or similar system that do not need constant monitoring during a dive or situations where trailing high pressure hoses are not ideal.

- > Compatible with 300 bar cylinders with a pressure scale up to 350 bar.
- > The gauge is fitted directly to the high pressure port of a first stage.





APEKS WTX AND WTX-D SERIES



The WTX and WTX-D Series is a selection of harnesses, buoyancy cells and accessories which offer unparalleled versatility due to the modular nature of the whole system. Each component can be configured into a highly technical rig for those trained to push the limits, or scaled down to make a travel friendly set up suitable for any diver.

Each product has been carefully designed by the Apeks' engineering team in conjunction with some of the most accomplished technical divers in the world. Each component has undergone extensive field-testing to make sure the design is right. The materials were selected for strength and durability and the result is a product that technical divers can have complete confidence in.





NEW FOR 2015!

WTX-D SINGLE CYLINDER DONUT WINGS

- > Narrow wings specifically designed for single tanks.
- > Very streamlined and compact.
- > They offer optimum balance and are very stable.
- > They do not wrap around the tank (taco) as larger wings will often do.
- > Rugged, durable heavy duty materials and hardware.
- > Fondly referred to as "donuts" due to their shape.

Inflator - K style with brass buttons

- > Low profile oval-shaped hose.
- > Safety cable to prevent hyperextension.
- > Positioned off-centre so as to not interfere with first stage.

Dump Valve

- > Low profile flat valve.
- > Positioned in front, lower-left side.
- > Tank stabilizer bars.

Drains

- > 2 large drain grommets.
- > Centre mesh drain panel.



WTX-D18

18lbs lift



WTX-D30

32lbs lift



WTX-D40

40lbs lift



NEW FOR 2015!

WTX-D45 TWIN CYLINDER DONUT WING

- > Specifically designed wing for twin tanks.
- > Very streamlined because it's compact.
- > Offers optimum balance and stability.
- > Does not wrap around the tank (taco), unlike larger wings.
- > Rugged, durable heavy duty materials and hardware.
- > Fondly referred to as a "donut" due to it's shape.

Inflator - K style with brass buttons

- > Low profile oval-shaped hose.
- > Safety cable to prevent hyperextension.
- > Positioned off-centre so as to not interfere with first stage.

Dump Valve

- > Low profile flat valve.
- > Positioned in front, lower-left side.
- > Tank stabilizer bars.

Drains

- > 2 large drain grommets.
- > Centre mesh drain panel.



WTX-D45

45lbs lift





WTX BACKPLATE STEEL OR ALUMINIUM

The backbone of any system - this cleverly designed back plate can be used with the webbed harness or inserted into the WTX Harness.

- > Offered in either 304 stainless steel or 6061 anodised aluminium alloy.
- > The stainless steel weighs approx 5 lbs (2.2 kg).
- > The aluminium weighs approx 1 lb 11oz (753g) .
- > Upper and lower slots accommodate nylon cylinder bands so a single cylinder can be strapped directly to the plate. Having a series of 4 slots provides lateral stability of the cylinder, which traditional 2 slot plates cannot.
- > 3 holes at the top of the plate offer a range of height adjustments for the buoyancy cells and the cylinders. In addition, a corresponding lower centre slot allows for lower band bolts that are misaligned.
- > 2" wide crotch strap slot.
- > Upper and lower perimeter holes along either side and holes along the bottom allow for the mounting of accessories.
- > Both offer an electro-plate finish and a laser-etched Apeks logo to enhance the look of the plate.



WTX ULTRALIGHT TRAVEL PLATE

- > The Ultralight Travel Plate is ideal for those that like to travel with plate and wings.
- > Paired with the WTX-D18 donut wing, it makes a very lightweight, streamlined kit.
- > Requires the Deluxe One-Piece Webbed Harness.
- > Can accept SureLock Weight System directly or by using SureLock Attachment plates.

WTX DELUXE ONE-PIECE WEBBED HARNESS

This simple, yet strong, harness can take the load of a fully rigged technical diver. It can be easily customised with the hardware of your choice.

- > 12' of solid 2" (5cm) webbing with centre grommet
- > 2" (5cm) wide crotch strap
- > 6 stainless 2" (5cm) D-rings
- > Includes neoprene shoulder protectors
- > 2 elastic retaining loops on shoulders and one on crotch strap
- > Heavy duty stainless waist buckle
- > 6 stainless serrated retainers
- > Please note tank bands and back plate are not included with the harness



*Back Plate NOT included with Deluxe Webbed Harness

NEW FOR 2015!

WSX-25 SIDEMOUNT HARNESS

Brand new from Apeks comes the WSX-25 sidemount harness, a feature-rich sidemount harness system which comes complete with the bladder, harness with crotch strap, D-rings, bungee and accessory butt pack.

The bladder is constructed from Armoguard, a super-tough material normally found in public safety diving and military products. This smooth material is ten times more abrasion resistant than standard Cordura (the material used on many other sidemount harness bladders), making this a wing designed with serious sidemount diving in mind.

The Apeks "SlideLock" sliding D-ring is brand new and unique to Apeks. It allows the diver to easily change the position of the cylinders as their buoyancy changes during the dive. No need to clip your cylinder on and off, simply adjust the position of the D-ring during your dive.

The two-piece plate system is adjustable to nearly any torso length, making this a one size fits all system. The system also has individual webbing sections rather than one long piece running through the harness, which means the complete system can be quickly and easily adjusted.

Bladder

- > 27lbs lift
- > Armoguard exterior
- > Additional protective layer of Armoguard protects the bladder against abrasions in confined spaces
- > Reversible inflator can be mounted on left or right side
- > Grommets at lower corners allow for mounting bungee to keep the bladder streamlined to your body

Harness

- > Solid 2" (5cm) webbing comes pre-assembled
- > Removable crotch strap made of 2" (5cm) soft webbing
- > 4x two inch stainless steel D-rings (2 angled on shoulders, 1 angled and 1 flat on the crotch strap)
- > 2x "SlideLock" sliding stainless steel D-rings on waist strap allow for easy adjustment of cylinders throughout the dive
- > 2x stainless steel drop D-rings along the lower back are for connection to the included butt pack, or for marker buoys, reels or other accessories
- > Heavy-duty waist buckle made of stainless steel
- > Two-piece stainless steel plate allows the torso length to be adjusted to fit any diver

Zippered Butt Pack with stainless steel snap hooks included

Weight pouches are mounted on the spine strap and hold over 18lbs (9kgs) of weight

Comes complete with two sizes of bungee and five stainless steel bolt snaps

Two grommet strips allow the diver to adjust the weight pouch and bladder based on their specific requirements





BLACK ICE

The Black Ice is designed with the more serious recreational diver in mind. Designed to provide the comfort desired for daily diving and the features needed to take you to the edge, the Black Ice is ideal for the diver who does it all.

- > Equipped with flat E valves on the right shoulder and lower rear right and left sides (fitted with easy grip pull dumps). Flat E Valves are extremely streamlined with a one way design to keep water out.
- > Griplock tank band.
- > Two shoulder settings for true custom adjustments.
- > Adjustable chest strap.
- > 3 waistband settings.
- > 3 bladder retractors.
- > Wrapture Harness® System.
- > 5 stainless steel D-rings.
- > SOLAS reflector inflator retainer.
- > Powerline inflator with internal dump cable.
- > Innovative swivel shoulder buckles.
- > Knife attachment points.
- > Right hand large utility pocket.



AIRWAY COMPLETE

- > High performance inflator with excellent flow rates.
- > Simple design creates a dependable and easy serviced airway.
- > Rugged housing with solid brass buttons.
- > Elliptical hose for lower profile and less drag.
- > An internal safety cable prevents hose from being hyperextended.
- > Simple 90° elbow at the top.





STAINLESS STEEL BOOK SCREWS

The WTX and WTX-D Series is a selection of harnesses, buoyancy cells and accessories which offer unparalleled versatility due to the modular nature of the whole system. Each component can be configured into a highly technical rig for those trained to push the limits, or scaled down to make a travel friendly set up suitable for any diver.

SURELOCK™ WEIGHT SYSTEM

This popular accessory is ideal when you need to add additional weight to your rig.

- > Bolts directly to the WTX Harness.
- > Mounts to the back plate with use of SureLock™ attachments below.
- > Includes necessary attachment hardware plus spares.
- > 2" stainless adjustable D-rings on the outside of each pocket.
- > Features the SureLock™ (patented) mechanical weight release buckles which prevent weights from releasing until you want them to.
- > Each pocket holds up to 10 lbs (4.5kg) of lead.
- > Includes attachment grommets to mount a range of Aqua Lung Squeeze Lock knives.



SURELOCK™ ATTACHMENTS

This unique accessory allows you to mount the SureLock™ Weight System (Patented) directly to the WTX Harness, WTX Back Plate or the Ultralight Travel Plate.

- > Includes necessary attachment hardware plus spares.
- > May be used without the SureLock™ Weight System to spread the weight of the cylinders over the hips.
- > 3 different grommet settings allow for proper positioning of the SureLock™ weight pockets.



WTX INTERNAL RETRACTOR KIT

Use this kit to provide internal retraction to your WTX air cell. Retractor bands allow the air cell to dump faster and more compactly which keeps you more streamlined in the water.

- > Can be installed on WTX-D buoyancy cells.
- > Comes with full instructions.
- > Consists of two retractor bands in a bag.





NEW FOR 2015!

RK3

Designed in collaboration with the US military and renowned for outstanding performance and reliability, the Apeks RK3 is a rugged thermoplastic rubber fin featuring an over-sized foot pocket to accommodate drysuit boots and a spring strap for easy donning and doffing.

FEATURES

- > Available in black, sizes medium, large and super.
- > The design has been the standard gear issue fin for military, special ops, coast guard and public safety divers for decades.
- > Traditional all rubber design.
- > Short wide blade provides maximum forward thrust while maintaining great manoeuvrability.
- > Vented blade design reduces resistance on the upstroke and enhances thrust on the downstroke.
- > The vents also eliminate vortexes that can occur along the back of the blade much in the same way split fins eliminate the vortex.
- > The blade material designed to hold up in the toughest environments, temperatures, and abuse.
- > Two large grommet holes designed to fit most karabiner for easy storage of the fins while accessing the dive site.
- > Spring straps as standard.
- > Custom designed buckle holds spring straps in optimum position.
- > Simple push pin design allows simple replacement of springs if necessary.





NEW FOR 2015!

APEKS LIFELINE SPOOLS

Inspired by technical diving and versatile enough to be used in a range of diving applications, the new LifeLine spool from Apeks features easy to grip flared sides to improve deployment and winding. Made from tough anodised aluminium alloy with high visibility line for low light conditions and with a super-tough leader and swivel as standard, the LifeLine is supplied with a bolt-snap and comes in three sizes/colours.

Available three sizes - Blue/45 metres, Green/30 metres and Purple/15 metres.





NEW FOR 2015!

APEKS TECH SHORT

Can be worn over a dry or wet suit to create additional pocket space, or can be worn alone for use in warm water or for other aquatic activities.

- > Unisex model: 5 sizes from S to XXL.
- > 1.5mm neoprene -small diamond lining outside, nylon inside.
- > Easy adjustable waist band with 2 hook and loop flaps and adjustable strap with a quick release buckle.
- > Big cargo pockets with expandable system, made in fabric to prevent the distortion of the shape.
- > Grommets for fast drainage.
- > D ring to secure accessories.
- > Protective rubber prints on the back reduces friction damage while increasing grip.
- > Taped sewing on back and inside legs to prevent broken threads.







NEW FOR 2015!

THE DRY-SERIES

If you need a workhorse in your dive kit, look no further than the new range of dry bags from Apeks. Tough, rugged and designed to haul equipment, the dry bags feature waterproof welded seams to ensure water doesn't get in – or out. Ideal for stashing wet kit post-dive or keeping personal possessions dry during a dive, you'll find the bags are at home in the wettest, harshest conditions around.

DRY100L SINGLE CORE WITH DRAIN DUMP

The DRY100 is made of a 1000D Nylon Core 0.6mm thick Tarpaulin which is designed to protect your gear from the most extreme environments.

The bag provides 113 litres of packing capacity and features a 33" (84cm) wide mouth roll-top to make it easy to stuff your kit in the bag. The bottom is a polymer reinforced foam that reduces impact force and is hard-wearing. Removable backpack straps make those long hikes to beach and cave dives way easier.

The side pocket/changing mat is removable so you don't have to haul your whole bag out to protect your gear while you change out of your suit.

The drain dump means you can even use your bag as a kit wash bath!

If your dive life needs a bag that can keep up, you've found it.

- > The main bag is a waterproof roll top duffel with a 33" (84cm) wide mouth opening.
- > The material is a 1000D Nylon Core 0.6mm Tarpaulin.
- > It's designed to be rugged and to protect your gear from the most extreme environments.
- > The bottom is a polymer reinforced foam pad to help reduce impact force and wearing. The bottom panel doubles as a trolley cart sleeve.
- > A removable side pocket features a splash proof zipper with an easy grip puller. The changing mat is 32"x23" and double layered tarpaulin.
- > Removable air mesh backpack straps
- > Compression straps with a comfortable haul handle



DRY75L TWIN CORE FOR COMBINED WET/DRY STORAGE

The DRY75 is a workhorse of a dive bag that will easily carry all of your personal dive gear plus extra clothes.

The bag has 75 litres of carrying capacity. It sports a removable drycore to keep your wet gear away from your dry gear.

The main bag features a drain so you can rinse your equipment on the go and a splash proof top flap so you don't have to unroll your pack every time you need your passport.

If this bag isn't big enough, there are four easy attachment points for the Apeks DRY12 bags.

FEATURES

- > The main material is a 1000D Nylon Core 0.6mm Tarpaulin. It's designed to be rugged and to protect your gear from the most extreme environments.
- > The main compartment features a drain plug for rinsing your gear on the go.
- > The removable core is 500D Nylon Core 0.4mm Tarpaulin to separate your wet gear from your dry gear.
- > The bottom is a polymer reinforced foam pad to help reduce impact and wearing.
- > The top flap is a splash proof pocket for easy document and personal items storage.
- > There are 4 attachment points for the Apeks DRY12



DRY12L SINGLE CORE FOR WET OR DRY STORAGE

The DRY12's main function is to modularly attach to the Apeks DRY100 & DRY60.

The four stainless steel karabiners on the DRY12 latch to the four stainless steel D-rings over the Apeks logo on the side of the DRY100. When attached, the waterproof roll-top opening on the DRY12 is conveniently located and easily accessible.

The DRY60 has four locations to attach multiple DRY12 bags. This increases your DRY60's packing capacity by 48 litres. It also provides four added dry compartments to your bag.

The DRY12 also holds up on its own. The four karabiners and adjustable straps make it easy to strap down to the deck of a boat, hang inside your sleeping quarters, strap to other bags or use as a carry-on.

FEATURES

- > The main material is a 1000D Nylon Core 0.6mm Tarpaulin. It's designed to be rugged and to protect your gear from the most extreme environments.
- > The webbing is 1" (2.5cm) pp nylon with MOLLE straps for attaching small pouches and accessories.
- > The tri-buckles and karabiners are stainless steel with a metallic black coating.
- > The ends of the adjustable straps are designed to weave in and out of the tri-buckles easily. This is a fail safe system in case the karabiners gets damaged.
- > The buckle is a Duraflex buckle





APEKS CAVE EXPLORATION PROJECT

Interview with Garry Dallas

Tell us about the Apeks Cave Expedition

Myself and Niels Horemans spent a year planning our expedition to Mexico, continuing our quest to make a connection between the Calavera cenote and Grande cenote located in the town of Tulum.

We also wanted to investigate several virgin cenotes, which we were given exclusive rights to explore by the local land owner.

It was very important to us that we were able to survey the cenotes during our expedition, historically documenting our findings to show the links between each cenote system. It is a cave diver's dream, so we set about forming plans to make it happen!

Why did you choose Apeks regulators to support you underwater?

As a time served mechanic, we have a saying in the garage, 'use the right tool for the right job', which is why I always use the Apeks DST XTX50 series sidemount regulator set.

Not only is it a robust, easy to maintain, fully adjustable and frankly speaking a beautiful looking regulator, it's actually perfect for the standardised sidemount configuration we use and one the world is beginning to adopt.

After 14 years of diving most makes and models of regulator, I started using Apeks regulators about eight years ago and have never looked back since. I've used my XTX50s in 2 degree water temperatures during ice dives without any hint of a freeflow and on Trimix dives down to 100m providing a satisfyingly smooth and well regulated breathe which gave me total confidence in bringing them deep into caves.

One of the fantastic features of the XTX series is that it has the Reversible Venturi System (RVS) which allows me to configure my regs to suit my diving style, whether it be cave, Trimix staging or open water. Being able to change the inlet breathe from right to left in under two minutes is a feature no other regulator has, though the work must be carried out by an authorised Apeks technician.

Apeks have really fine-tuned their regulators over the years, not only in performance but also in stylish looks which have a purpose. Their latest models' finishing touches are proving to be the best ever, without a doubt. I particularly like the anti-bacterial body second stage, especially as I have several sets in my school. The two stage purge button is very useful



when demonstrating skills during courses.

I am as passionate about my regs as I am about diving and my life is worth more to me and my family than choosing the wrong breathing apparatus for the wrong job, that's why I trust Apeks.

Which regulators did you take and how did they perform in such an extreme environment?

We took two sets of the DST XTX50 sidemount regulators for our primary cylinders and eight sets of DST XTX40 regulators for our stages. They performed perfectly of course! One regulator started to get a wet breathe 200m into the dive so I decided to check the regulator before carrying on any further. Without the need for tools and leaving the gas switched on, I unscrewed the front cover exposing the diaphragm, then unclipped the exhaust ports to find a tiny piece of dead white coral rock in between the body and the rubber exhaust valve. I removed it, replaced the covers and breathed it...perfect again...in under a minute!

Sometimes in cave diving explorations, due to the environment, we can expect the unexpected. Tiny particles floating around while we're trying to fit through small gaps, with our stage regs so close to the floor, small particles coupled with a flow of water could end up in the exhaust ports of any make of stage regulator if you're not breathing off it at that time. This just proved how easy Apeks regulators are to maintain...even underwater!

How did the expedition go?

This has been an awesome time in my life; my only regret is not having done it sooner. We were so privileged to be the first to explore the virgin cenotes and I will never forget those moments.

TEAM & PROJECTS

The Apeks Tek Team is a group of independent technical divers based around the world, a mixed group of cave divers, deep divers, expedition divers, ice divers and divers using gas blends. They act as our field test team, taking new products, rigorously testing them in their local environment and giving honest feedback on the performance of the product.

It means that when we release a final Apeks product to the market, it has already received extensive real life testing. The Tek Team also help with new product development, which means Apeks can develop products inspired by and requested by technical divers.



José Miguel Mastache Villalobos
Mexico

Image: Blue Pixel



Ian France
UK

Image: Dean Martin



Garry Dallas
UK

Image: Jason Brown - www.bardophotographic.com



Etienne Mackensen
Germany



Edward M. Szostak
USA



Drazen Goricki
Croatia

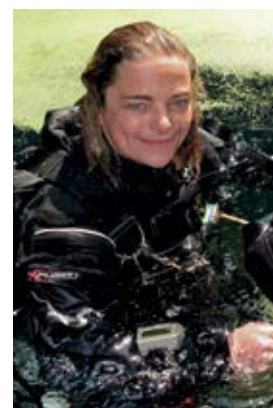


Adam Wood
UK

Image: Fiona Walker



Mark Powell
UK



Nathalie Lasselin
Canada



Paul Toomer
UK

An underwater photograph showing two divers in a rocky environment. The diver in the foreground is wearing a black wetsuit and has two white Apeks scuba tanks mounted on their back. The tanks have the Apeks logo and 'APEKS' printed on them. The diver is positioned near a large rock. In the background, another diver is visible, also with a scuba tank. The water is clear, and the rocks are dark and jagged. The overall scene is dimly lit, typical of an underwater environment.

DIVER SAFETY

Apeks products are designed and tested to thrive in the harshest of conditions. However, nothing replaces training, experience and common sense when it comes to any form of scuba diving. So while Apeks products can be found in some of the most demanding dive environments on Earth, never dive outside of your limits, whether that be in terms of your training, experience or physical ability.

Image: diversofthedark.com



Part of the Aqua Lung Group of Companies